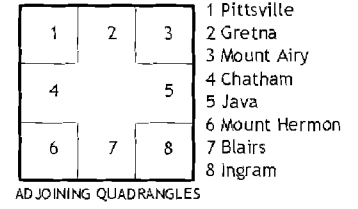
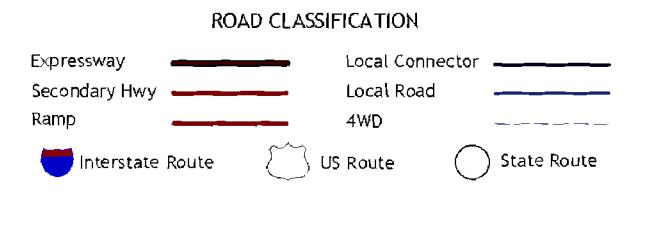
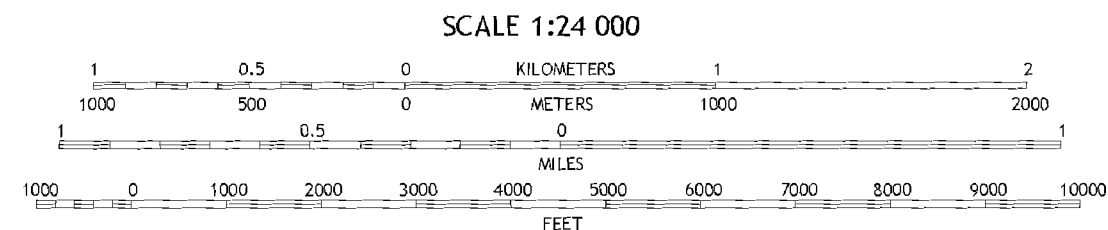
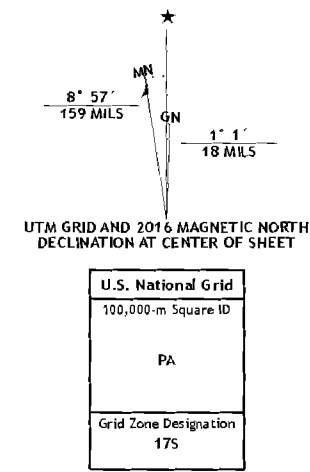


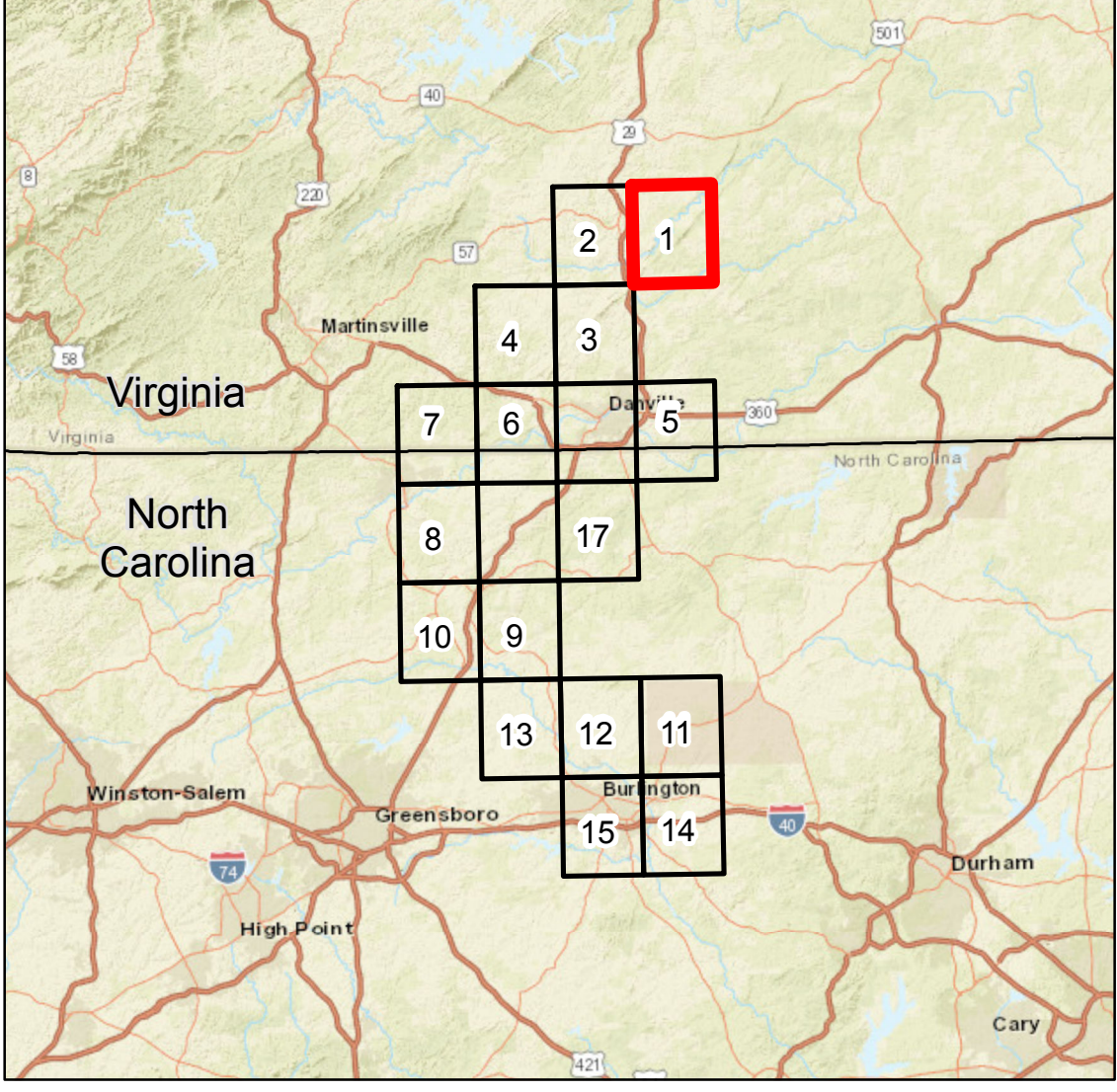
Produced by the United States Geological Survey  
North American Datum of 1983 (NAD83)  
World Geodetic System of 1984 (WGS84). Projection and  
1,000-meter grid: Universal Transverse Mercator, Zone 17S  
10,000-foot cross: Virginia Coordinate System of 1983 (south  
zone).

This map is not a legal document. Boundaries may be  
generalized for this map scale. Private lands within government  
reservations may not be shown. Obtain permission before  
entering private lands.

Imagery:.....NAP, July 2014  
Roads:.....U.S. Census Bureau, 2015  
Name:.....GNIS, 2016  
Hydrography:.....National Hydrography Dataset, 2014  
Contours:.....National Elevation Dataset, 2008  
Boundaries:.....Multiple sources; see metadata file 1072  
Wetlands:.....FWS National Wetlands Inventory 1977 - 2014



SPRING GARDEN, VA  
2016



**Legend**

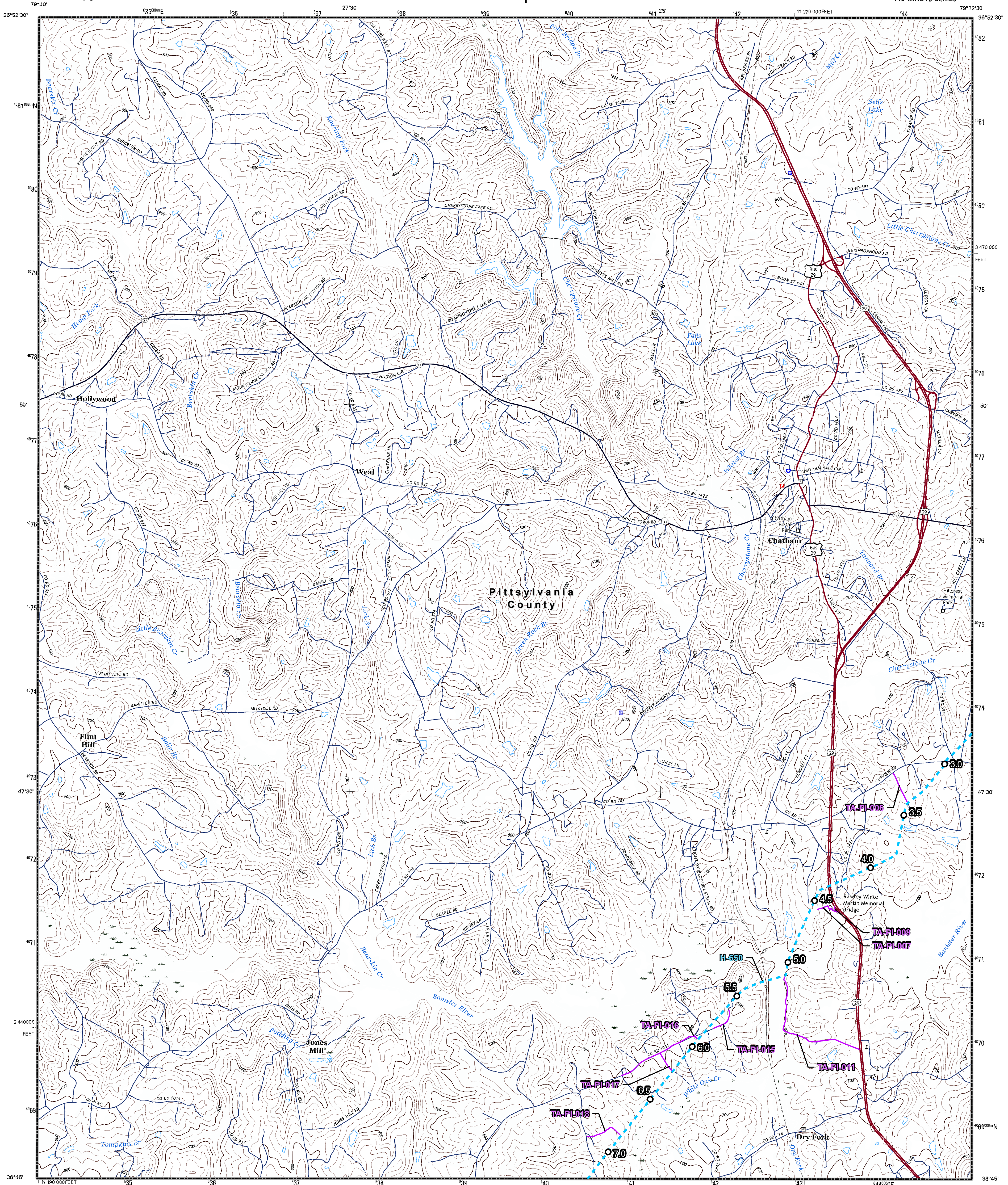
- Mileposts
- Compressor Station
- Facility Sites
- Contractor Yards
- Meter Stations
- ▲ Valve Sites
- Proposed Pipeline Route
- Access Roads
- State Boundary
- County Boundary

Data Source: EQT, TRC, ESRI, USGS

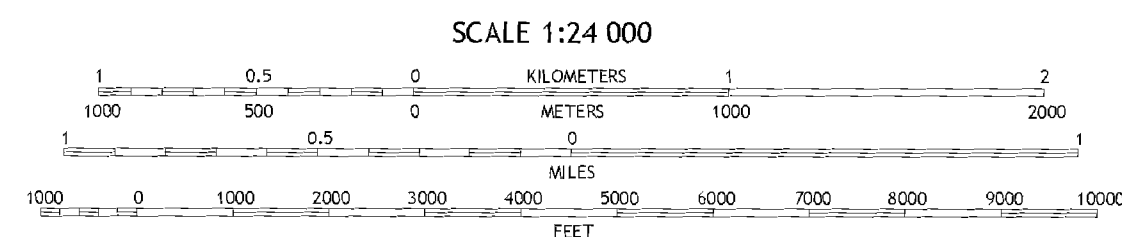
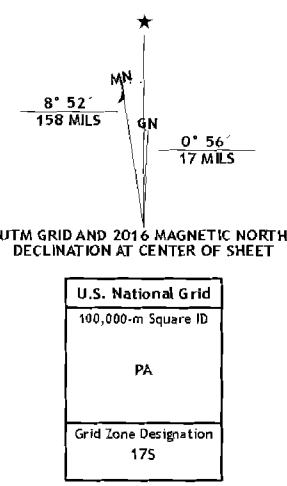
**Mountain Valley PIPELINE LLC**

<b>Appendix 1-B</b>	Date: October 14th, 2019	
PA-PIVA-H650-USGS-01	REV: P4	PAGE: 1

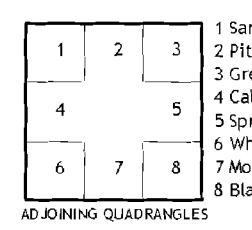
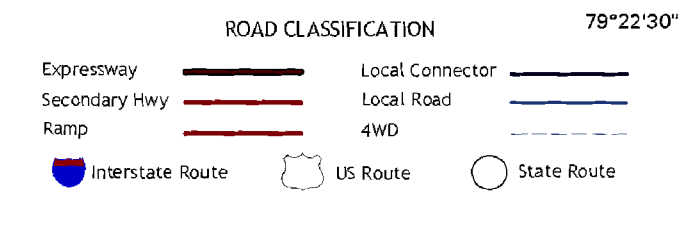
**TRC** Results you can rely on  
16350 Park Ten Pl Ste 101  
Houston, Texas 77084



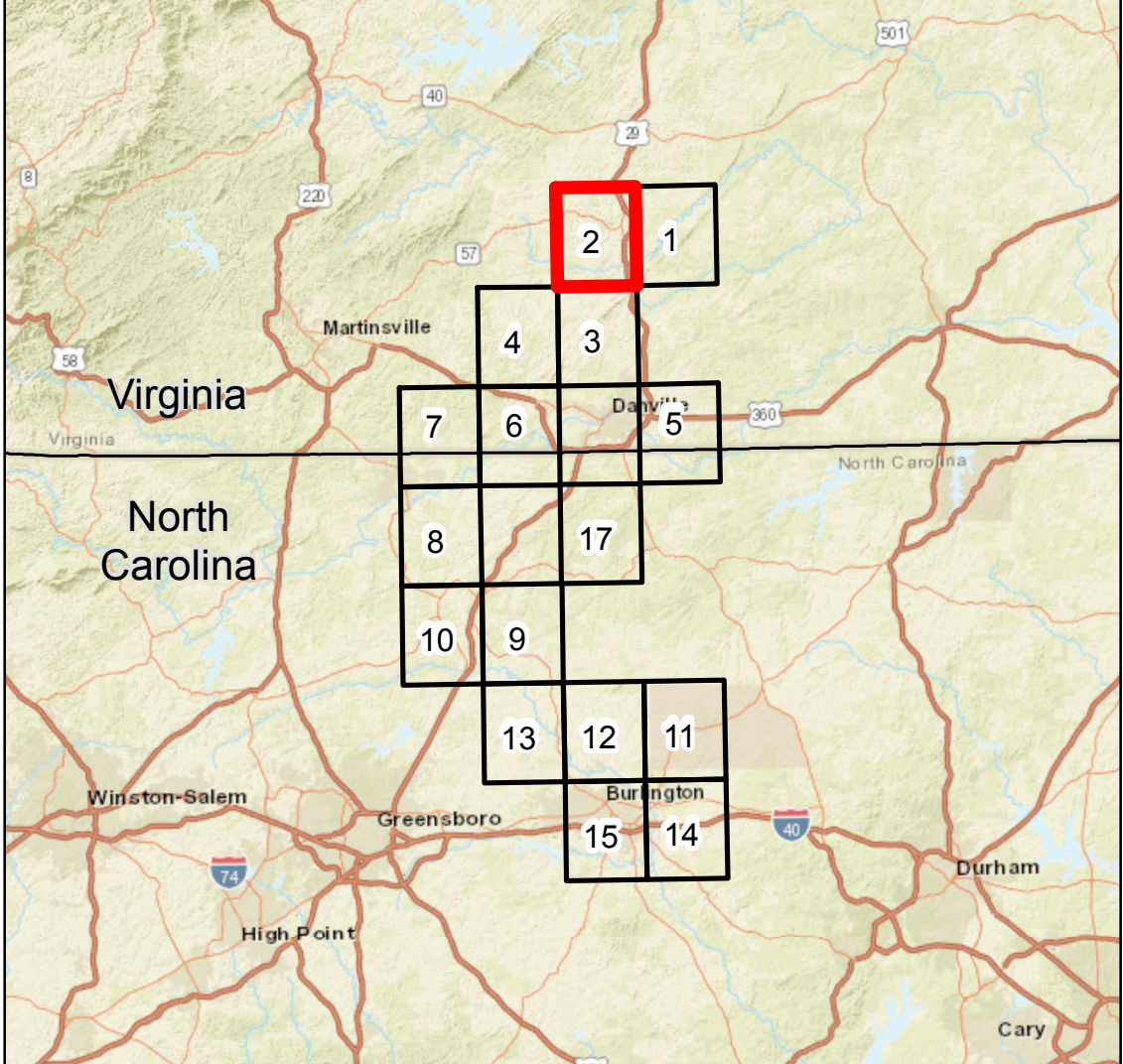
Produced by the United States Geological Survey  
North American Datum of 1983 (NAD83)  
World Geodetic System of 1984 (WGS84), Projection and  
1000-meter grid: Universal Transverse Mercator, Zone 17E  
10 000-foot ticks: Virginia Coordinate System of 1983 (south  
zone)  
This map is not a legal document. Boundaries may be  
generalized for this map scale. Private lands with government  
reservations may not be shown. Obtain permission before  
entering private lands.  
Imagery:.....NAIP, July 2014  
Roads:.....U.S. Census Bureau, 2015 - 2016  
Names:.....ONS, 2016  
Hydrography:.....National Hydrography Dataset, 2014  
Contours:.....National Elevation Dataset, 2008  
Boundaries:.....Multiple sources; see metadata file 1972 - 2016  
Wetlands:.....FWS National Wetlands Inventory 1977 - 2014



CONTOUR INTERVAL 20 FEET  
NORTH AMERICAN VERTICAL DATUM OF 1988  
This map was produced to conform with the  
National Geospatial Program US Topo Product Standard, 2011.  
A metadata file associated with this product is draft version 0.5.19



CHATHAM, VA  
2016



**Legend**

- Mileposts
- Compressor Station
- ⬢ Facility Sites
- ⬢ Contractor Yards
- Meter Stations
- ▲ Valve Sites
- Proposed Pipeline Route
- Access Roads
- ▭ State Boundary
- ▭ County Boundary

Data Source: EQT, TRC, ESRI, USGS

**Mountain Valley PIPELINE LLC**

Appendix 1-B Date: October 14th, 2019

PA-PIVA-H650-USGS-02 REV: P4 PAGE: 2

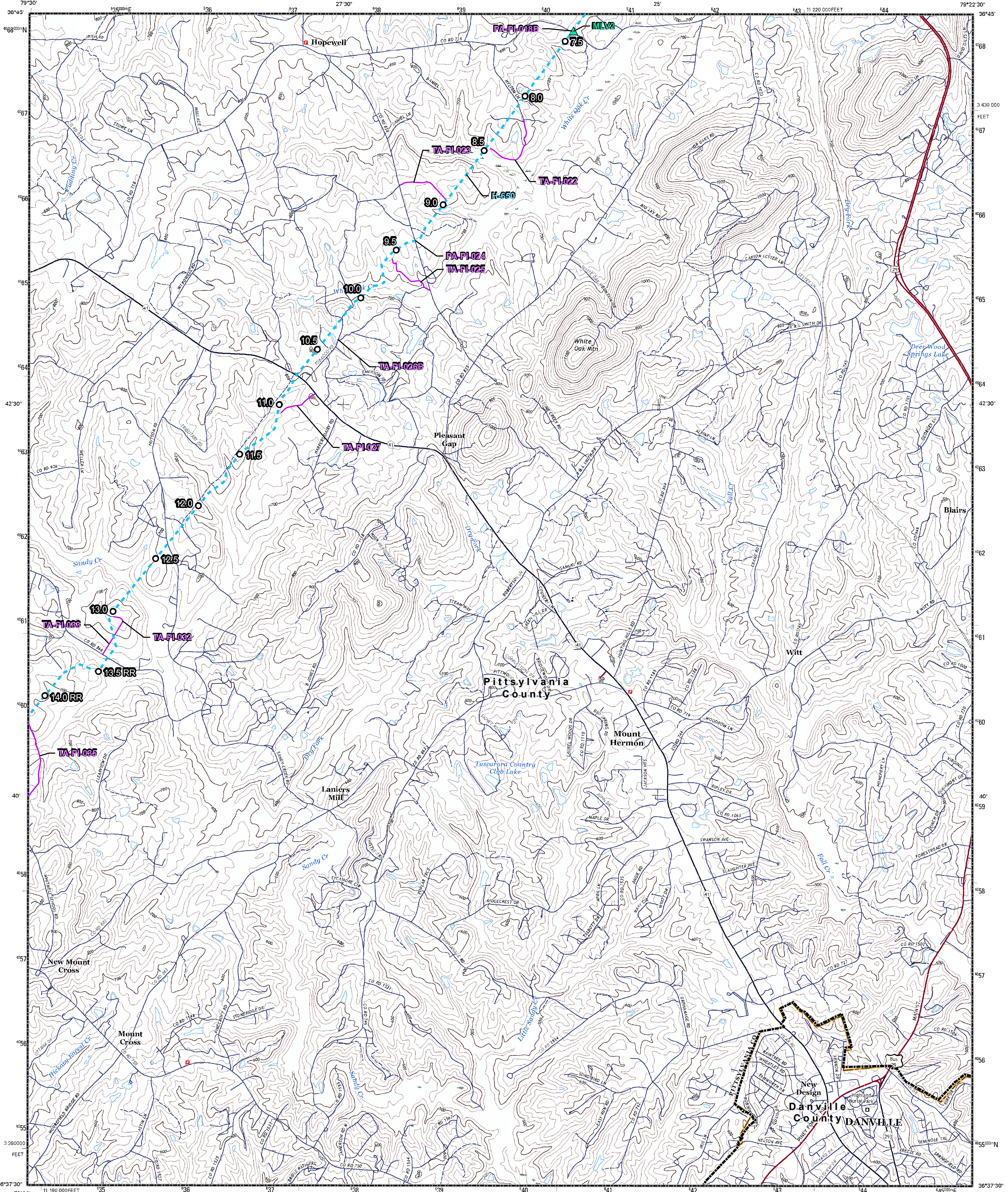
**TRC** Results you can rely on  
16350 Park Ten Pl Ste 101  
Houston, Texas 77084



U.S. DEPARTMENT OF THE INTERIOR  
U.S. GEOLOGICAL SURVEY



MOUNT HERMON QUADRANGLE  
VIRGINIA  
7.5-MINUTE SERIES

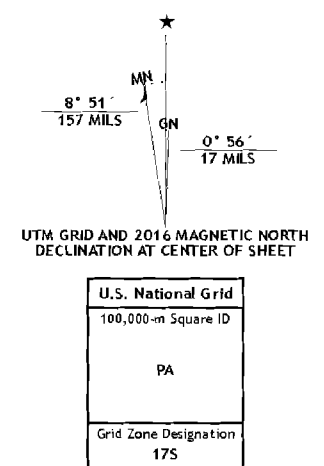


Produced by the United States Geological Survey  
North American Datum of 1983 (NAD83)  
World Geodetic System of 1984 (WGS84), Projection and  
1000-meter grid: Universal Transverse Mercator, Zone 17S  
10 000-foot ticks: Virginia Coordinate System of 1983 (south zone)

This map is not a legal document. Boundaries may be generalized for this map scale. Private lands within government reservations may not be shown. Obtain permission before entering private lands.

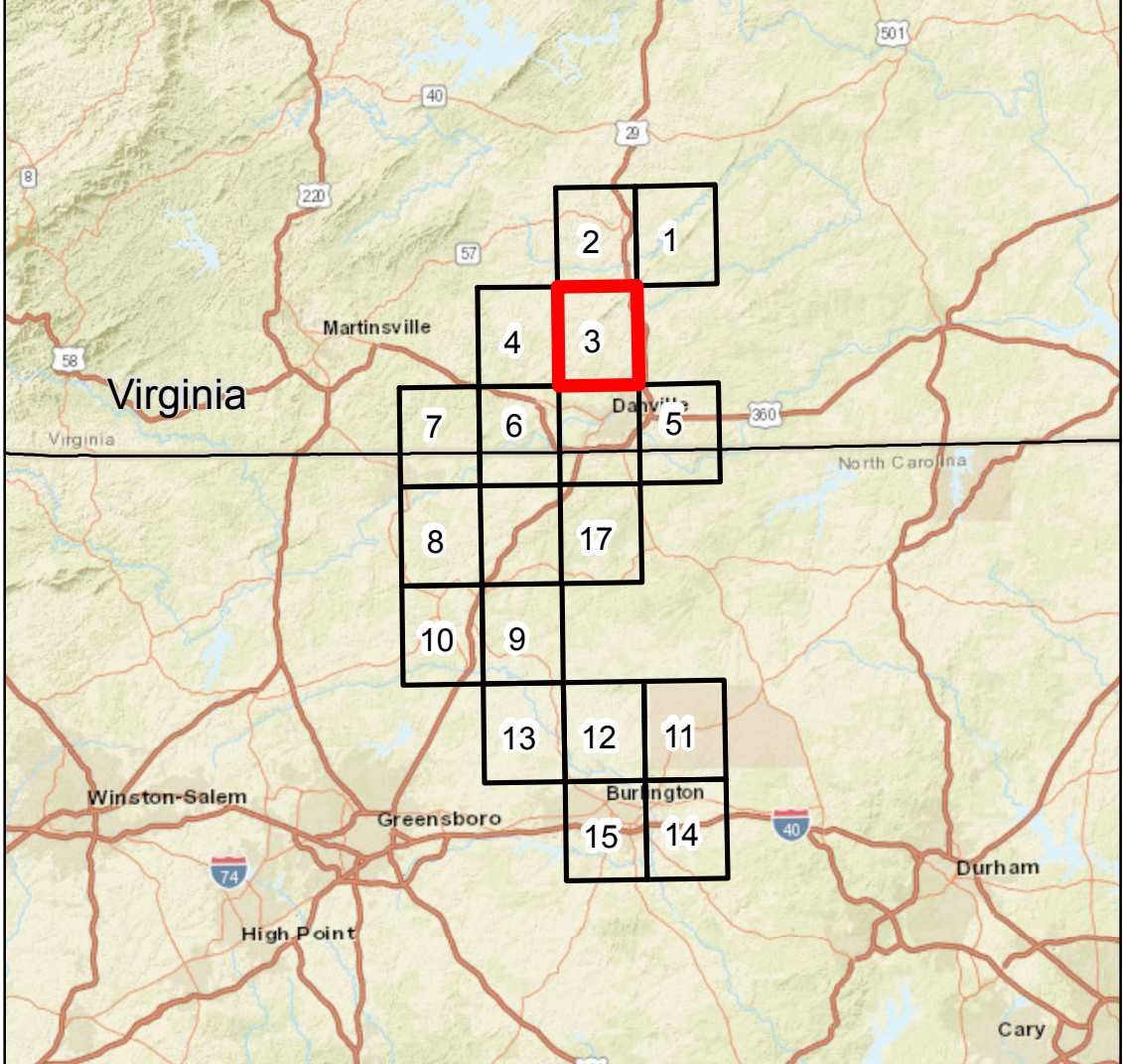
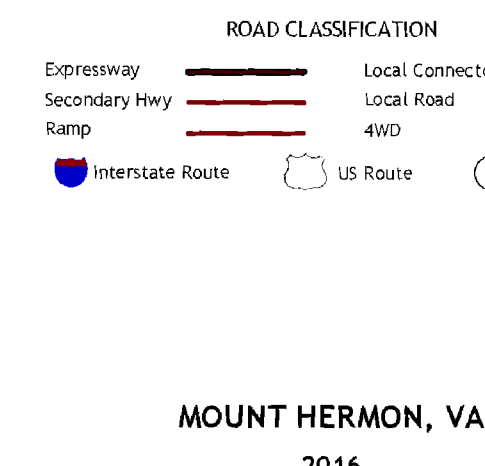
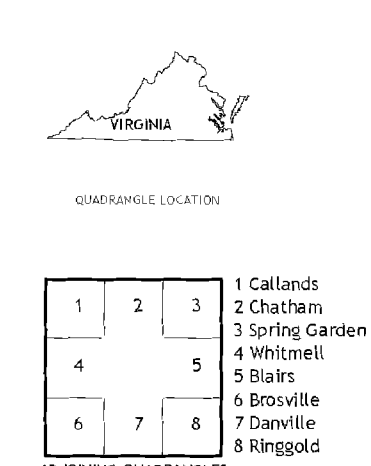
.....NAIP, July 2014  
.....U.S. Census Bureau, 2014 - 2016  
.....GNIS, 2016  
.....National Hydrography Dataset, 2014  
.....National Elevation Dataset, 2008  
.....Multiple sources; see metadata file 1972 - 2016

.....FWS National Wetlands Inventory 1977 - 2014



CONTOUR INTERVAL 20 FEET  
NORTH AMERICAN VERTICAL DATUM OF 1988

This map was produced to conform with the  
National Geospatial Program US Topo Product Standard, 2011.  
A metadata file associated with this product is draft version 0.6.19



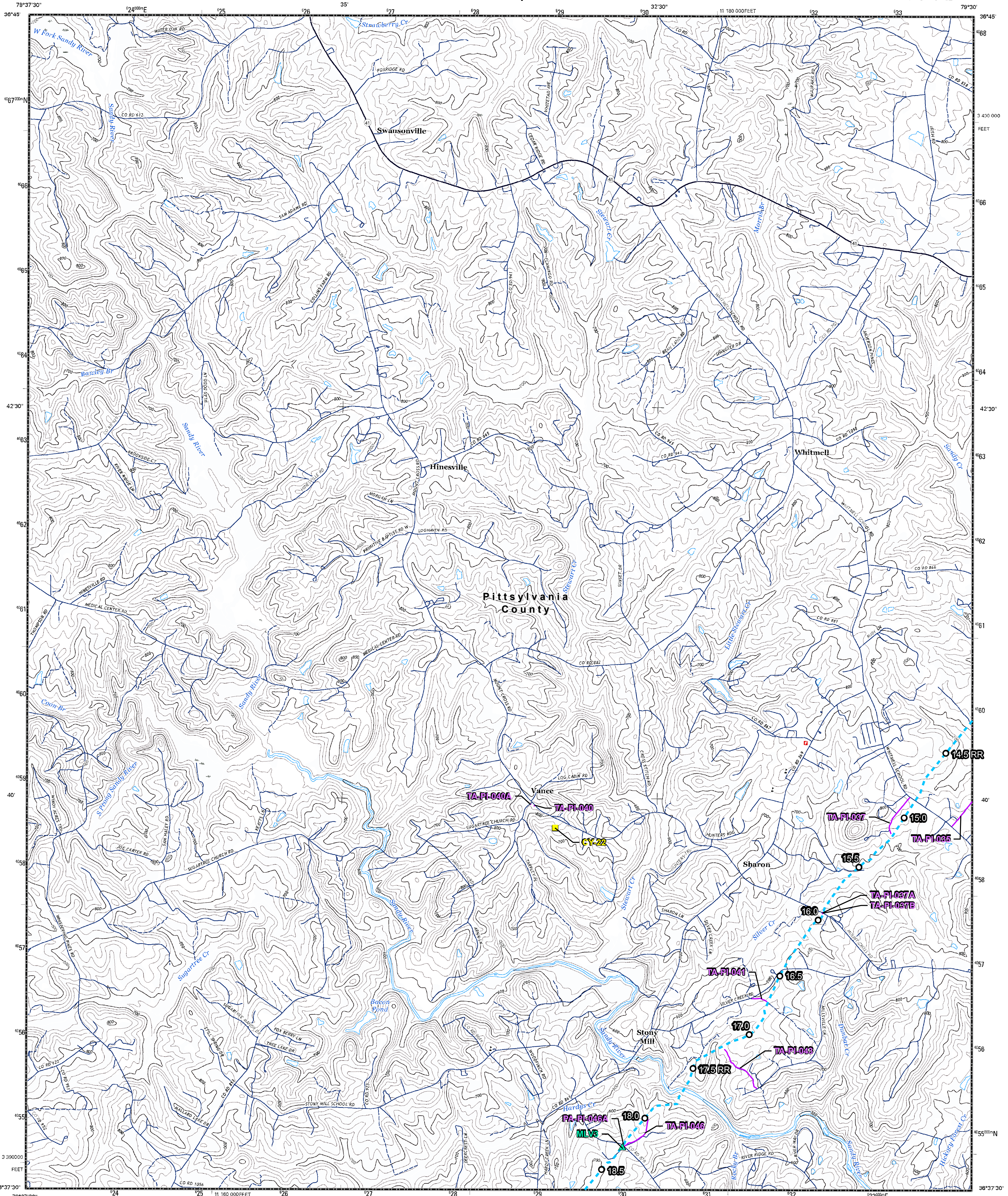
Legend	
○ Mileposts	----- Proposed Pipeline Route
● Compressor Station	----- Access Roads
■ Facility Sites	----- State Boundary
■ Contractor Yards	----- County Boundary
● Meter Stations	
▲ Valve Sites	

Data Source: EQT, TRC, ESRI, USGS

<b>Appendix 1-B</b>	Date: October 14th, 2019
PA-PIVA-H650-USGS-03	REV: P4    PAGE: 3

16350 Park Ten Pl Ste 101  
Houston, Texas 77084

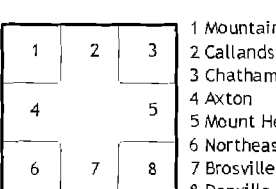
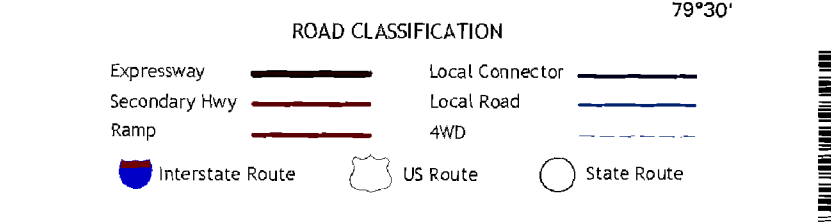
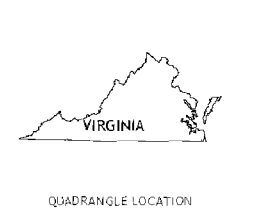
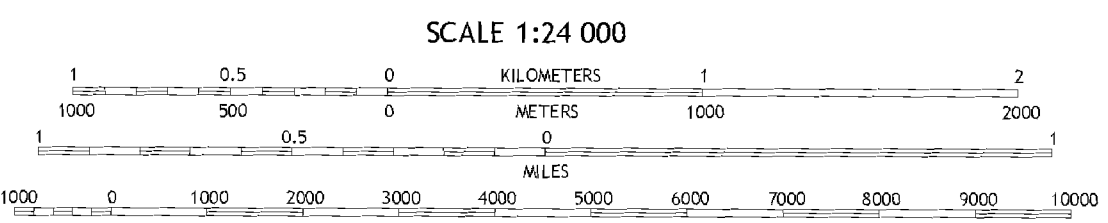
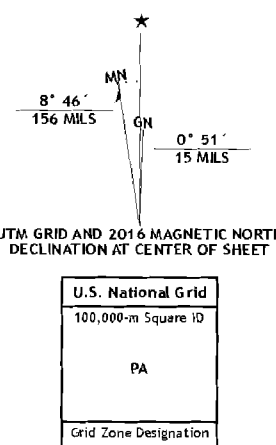
Results you can rely on



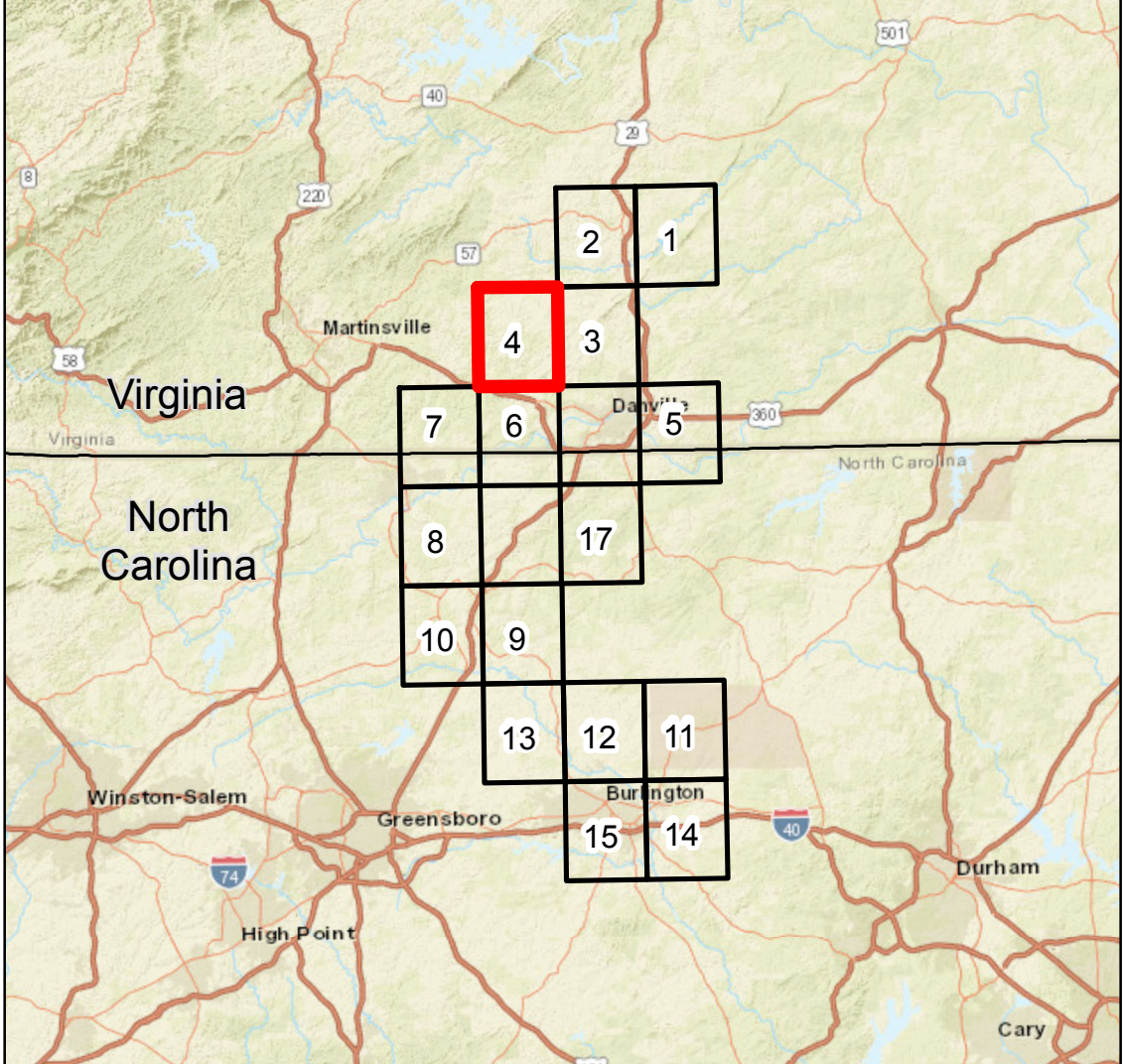
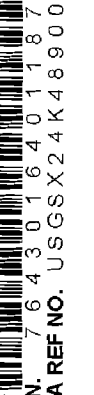
Produced by the United States Geological Survey  
North American datum of 1983 (NAD83)  
World Geodetic System of 1984 (WGS84), Projection and  
1000-meter Grid, Universal Transverse Mercator, Zone 17S  
10 000-foot ticks: Virginia Coordinate System of 1983 (south  
zone)

This map is not a legal document. Boundaries may be  
generalized for this map scale. Private lands within government  
reservations may not be shown. Obtain permission before  
entering private lands.

Imagery.....NAP, July 2014  
Roads.....U.S. Census Bureau, 2015 - 2016  
Names.....GNIS, 2016  
Hydrography.....National Hydrography Dataset, 2014  
Contours.....National Elevation Dataset, 2008  
Boundaries.....Multiple sources; see metadata file 1972 - 2016  
Wetlands.....FWS National Wetlands Inventory 1977 - 2014



WHITMELL, VA  
2016



**Legend**

- Mileposts
- Compressor Station
- ⬢ Facility Sites
- ⬢ Contractor Yards
- Meter Stations
- ▲ Valve Sites
- Proposed Pipeline Route
- Access Roads
- State Boundary
- County Boundary

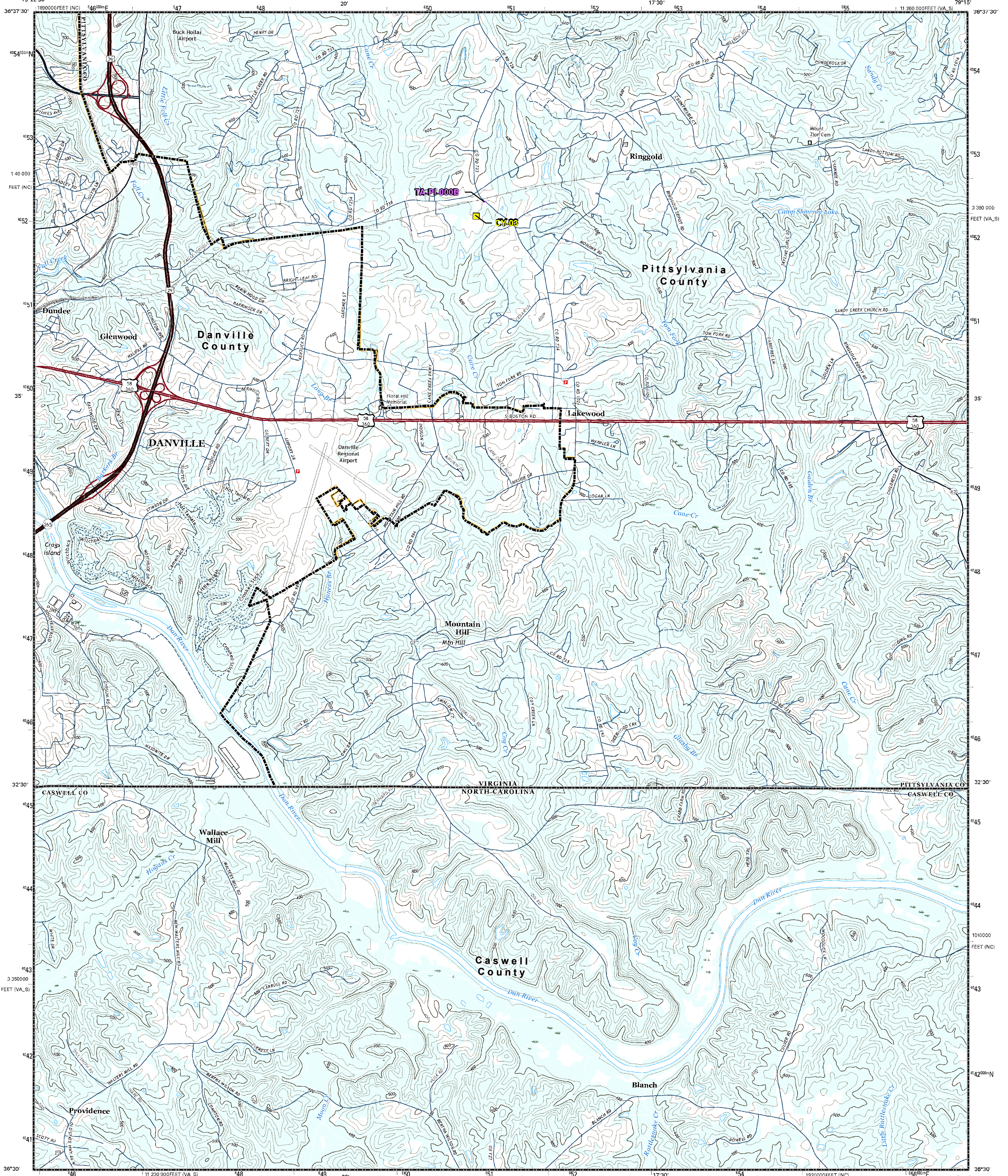
Data Source: EQT, TRC, ESRI, USGS

**Mountain Valley PIPELINE LLC**

Appendix 1-B Date: October 14th, 2019

PA-PIVA-H650-USGS-04 REV: P4 PAGE: 4

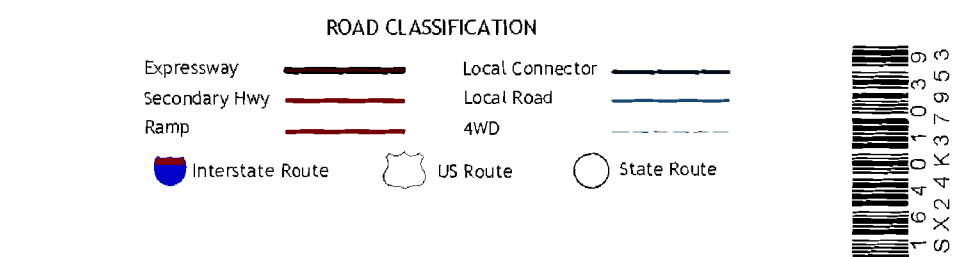
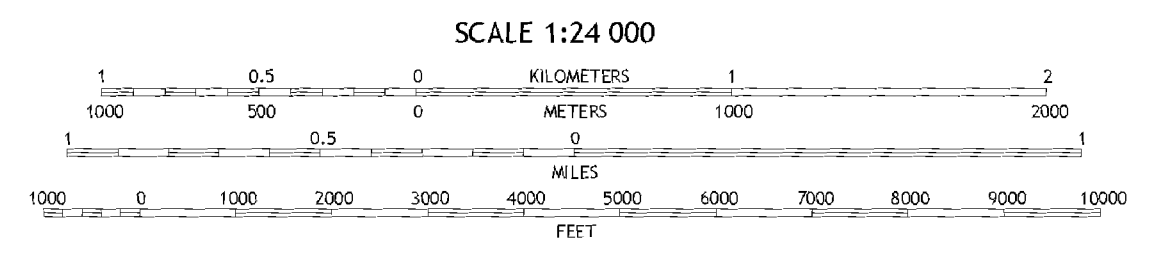
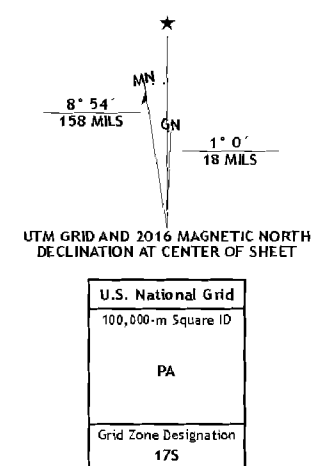
**TRC** Results you can rely on  
16350 Park Ten Pl Ste 101  
Houston, Texas 77084



Produced by the United States Geological Survey  
 North American Datum of 1983 (NAD83)  
 World Geodetic System of 1984 (WGS84). Projection and  
 1000-meter grid: Universal Transverse Mercator, Zone 17S  
 10 000-foot ticks: Virginia Coordinate System of 1983 (south  
 zone), North Carolina Coordinate System of 1983

This map is not a legal document. Boundaries may be  
 generalized for this map scale. Private lands within government  
 reservations may not be shown. Obtain permission before  
 entering private lands.

Images:.....NAIP, June 2014  
 Roads.....U.S. Census Bureau, 2015 - 2016  
 Names.....GNIS, 2016  
 Hydrography.....National Hydrography Dataset, 2014  
 Contours.....National Elevation Dataset, 1999  
 Boundaries.....Multiple sources; see metadata file 1972\_2016  
 Wetlands.....FWS National Wetlands Inventory 1977 - 2014

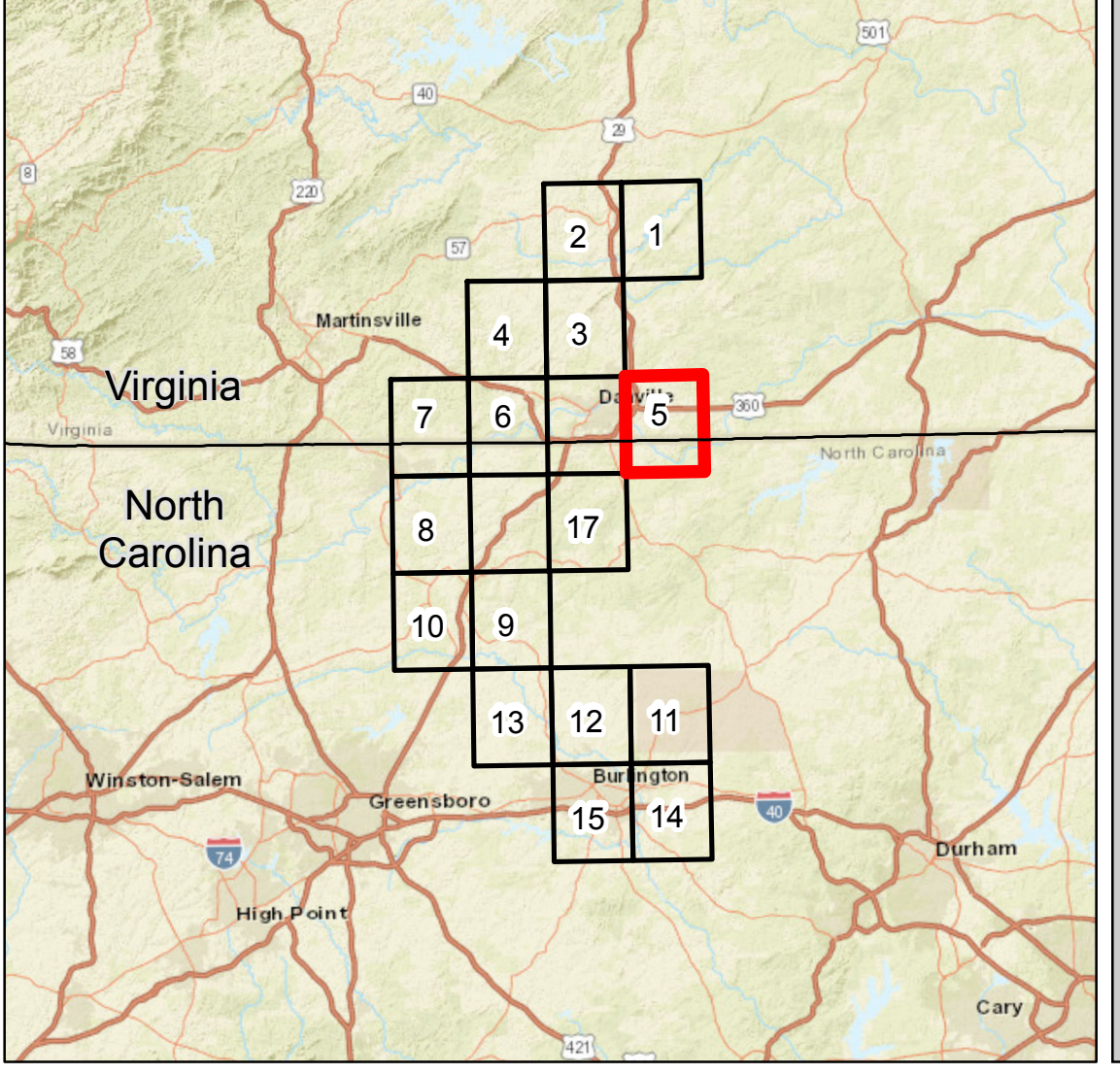
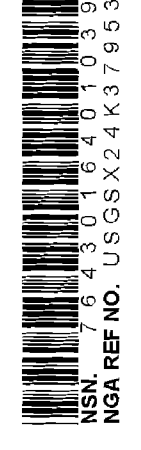


ADJOINING QUADRANGLES

1	2	3
4	5	6
7	8	9

1 Mount Hermon  
 2 Blain  
 3 Ingram  
 4 Danville  
 5 Milton  
 6 Park Springs  
 7 Vanceville  
 8 Leesburg

RINGGOLD, VA-NC  
 2016



**Legend**

- Mileposts
- Compressor Station
- ⬠ Facility Sites
- ⬠ Contractor Yards
- Meter Stations
- ▲ Valve Sites
- Proposed Pipeline Route
- Access Roads
- ▭ State Boundary
- ▭ County Boundary

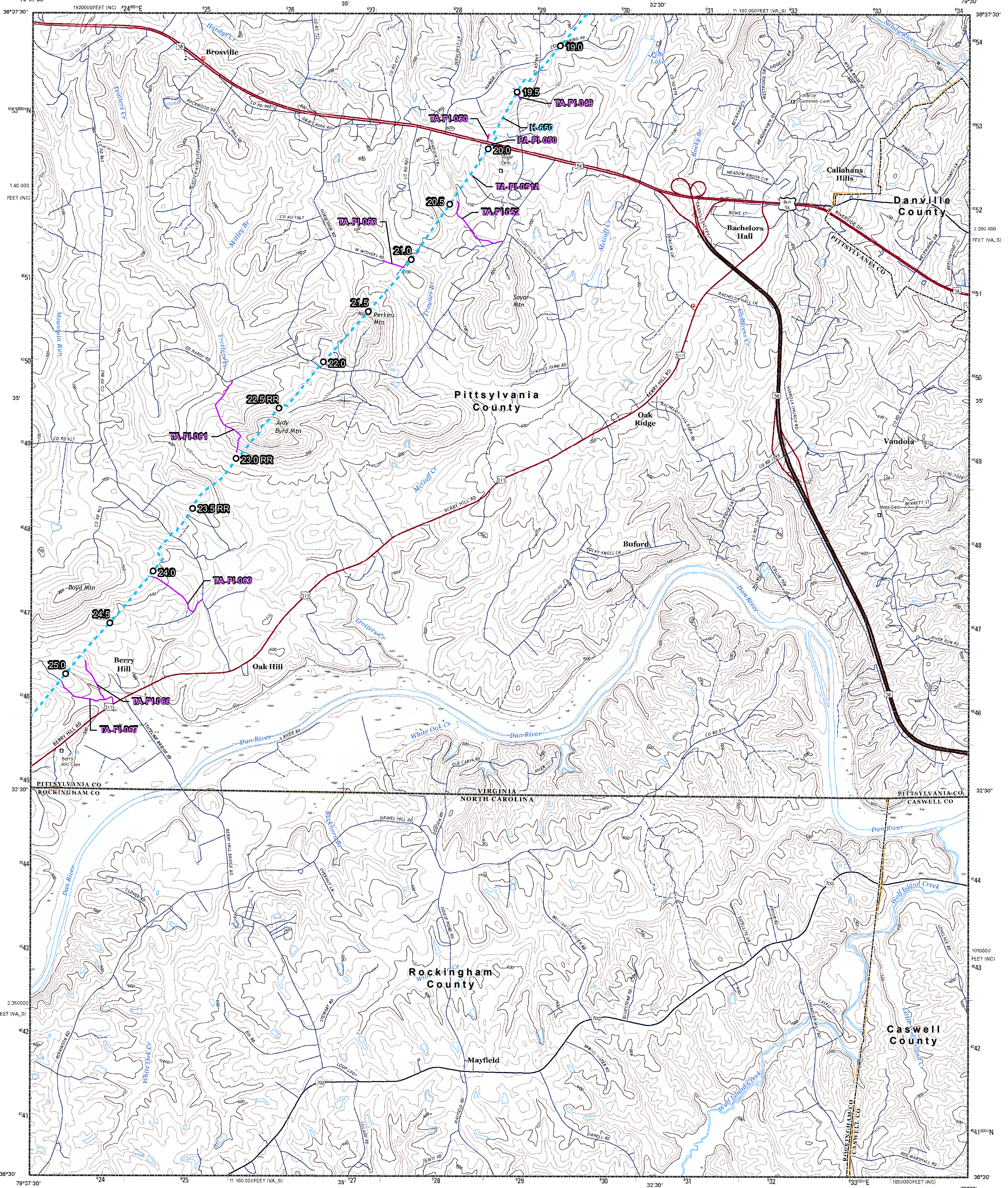
Data Source: EQT, TRC, ESRI, USGS

**Mountain Valley**  
 PIPELINE LLC

<b>Appendix 1-B</b>	Date: October 14th, 2019	
PA-PIVA-H650-USGS-05	REV: P4	PAGE: 5

**TRC**  
 Results you can rely on

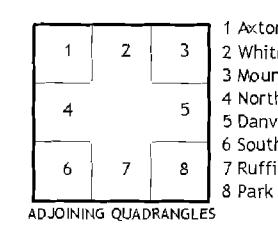
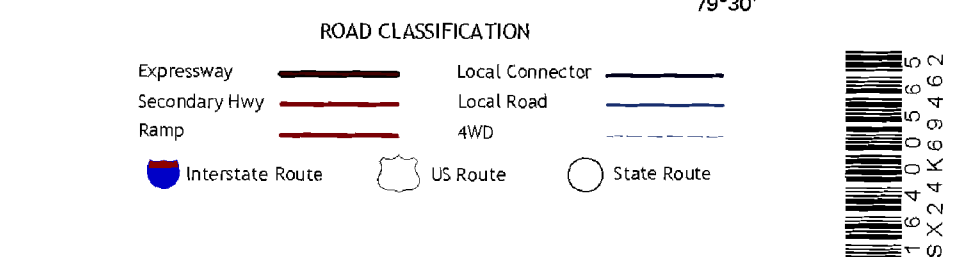
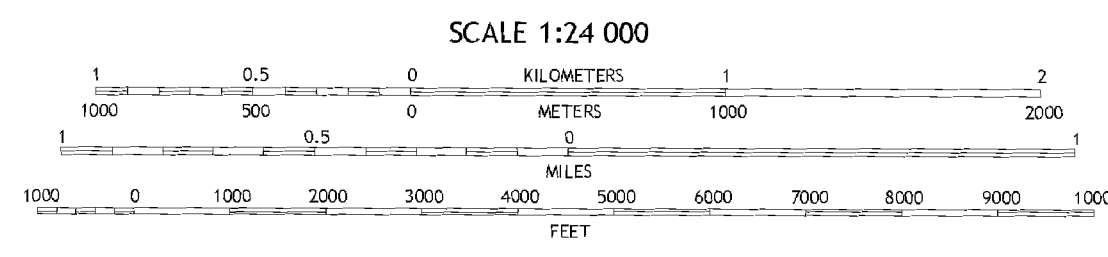
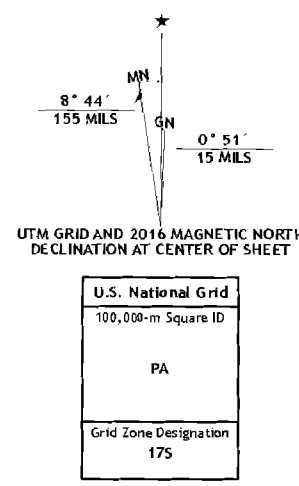
16350 Park Ten Pl Ste 101  
 Houston, Texas 77084



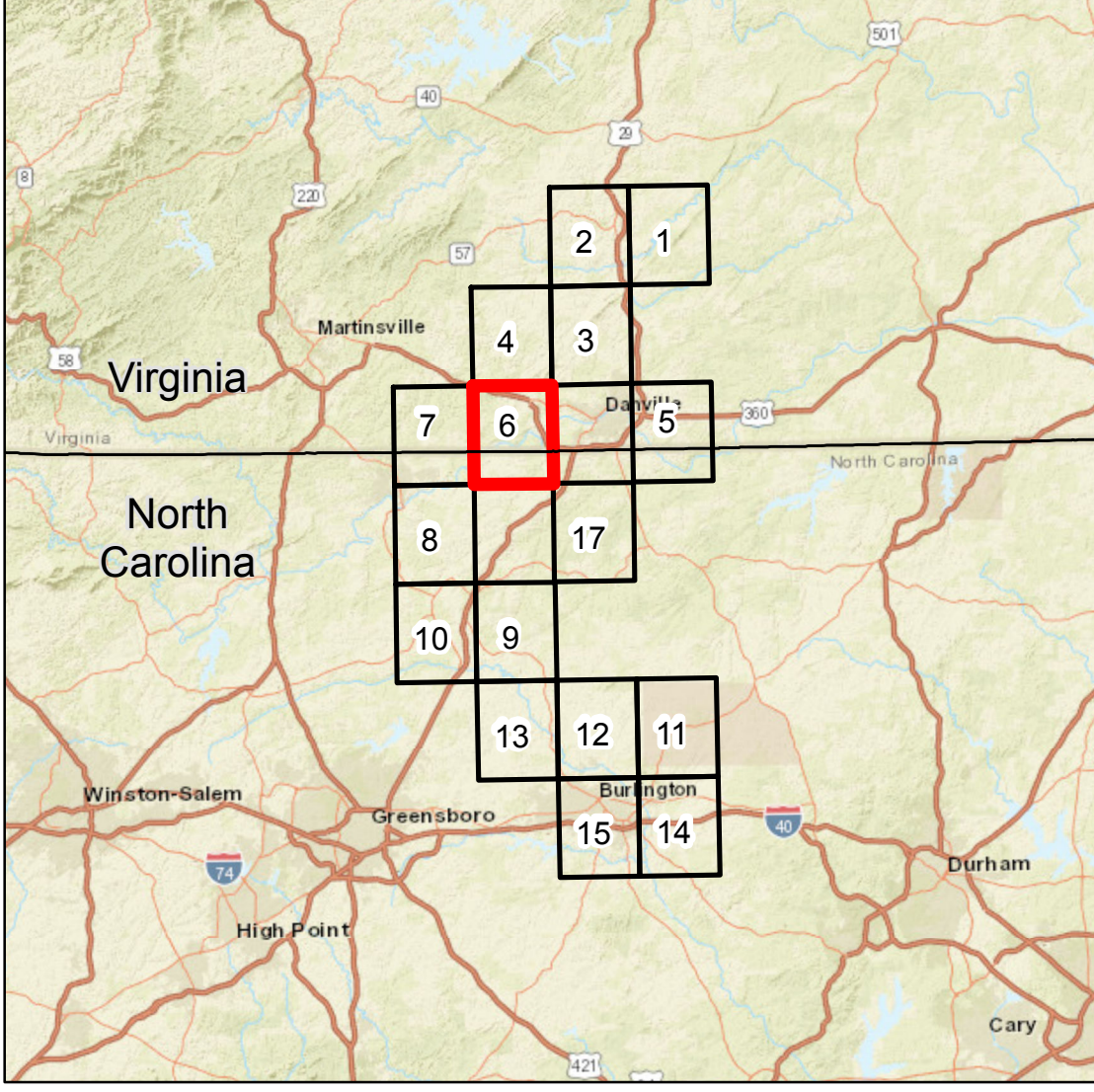
Produced by the United States Geological Survey  
North American Datum of 1983 (NAD83)  
World Geodetic System of 1984 (WGS84) - Projection and  
1000-meter grid: Universal Transverse Mercator, Zone 18S  
10 000-foot ticks: Virginia Coordinate System of 1983 (south  
zone), North Carolina Coordinate System of 1983

This map is not a legal document. Boundaries may be  
generated for this map scale. Private lands within government  
reservations may not be shown. Obtain permission before  
entering private lands.

Imagery.....NAIP, July 2014  
Roads.....U.S. Census Bureau, 2015 - 2016  
Names.....GNIS, 2016  
Hydrography.....National Hydrography Dataset, 2014  
Contours.....National Elevation Dataset, 1999  
Boundaries.....Multiple sources; see metadata file 1972 - 2016  
Wetlands.....FWS National Wetlands Inventory 1977 - 2014



BROSVILLE, VA-NC  
2016



**Legend**

- Mileposts
- Compressor Station
- ⚡ Facility Sites
- ⬜ Contractor Yards
- Meter Stations
- ▲ Valve Sites
- Proposed Pipeline Route
- Access Roads
- ▭ State Boundary
- ▭ County Boundary

Data Source: EQT, TRC, ESRI, USGS

**Mountain Valley**  
PIPELINE LLC

**Appendix 1-B**      Date: October 14th, 2019

PA-PIVA-H650-USGS-06      REV: P4      PAGE: 6

**TRC**      Results you can rely on  
16350 Park Ten Pl Ste 101  
Houston, Texas 77084