



MVP Southgate Project H-605 Line



REVISIONS		DATE	DESCRIPTION
REV. BY:	TRC	11/02/18	ISSUED FOR FERC SUPPLEMENTAL FILING
P2	TRC	10/29/18	ISSUED FOR FERC SUPPLEMENTAL FILING
P4	TRC	10/18/18	ISSUED FOR FERC SUPPLEMENTAL FILING

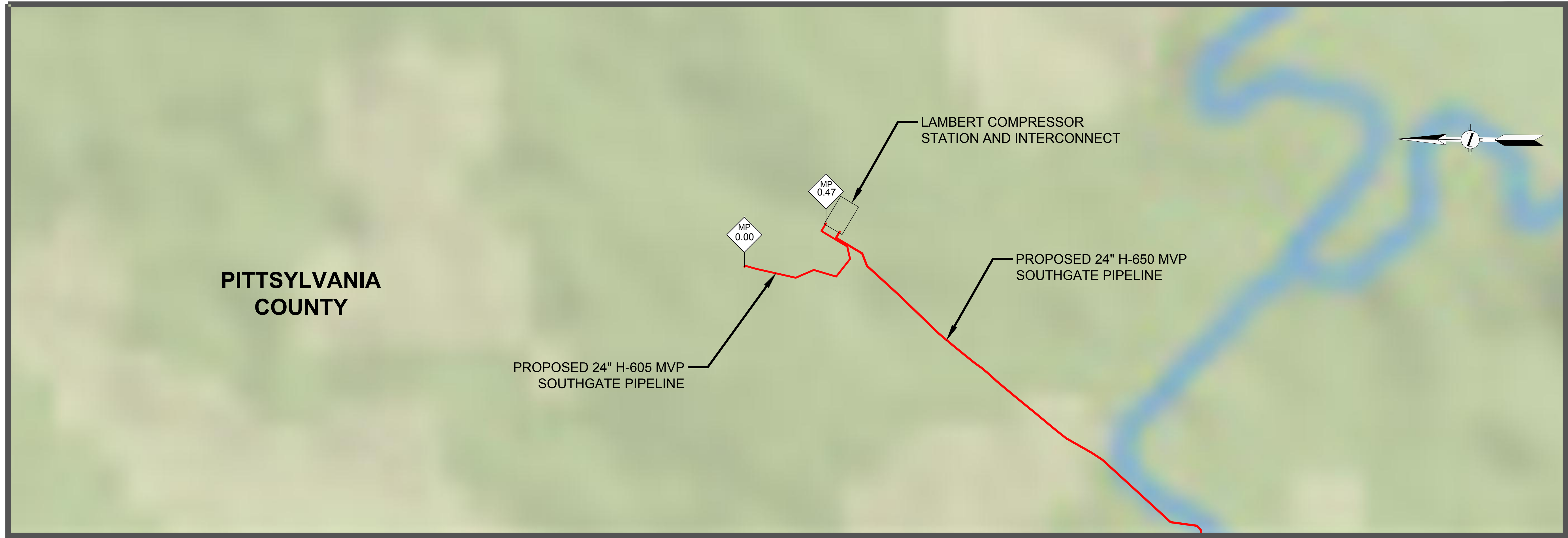
APPROVED FOR FERC	APPROVED FOR BIDDING	APPROVED FOR CONSTRUCTION
REV. BY	REV. BY	REV. BY
DATE	DATE	DATE

APPROVED FOR FERC	APPROVED FOR BIDDING	APPROVED FOR CONSTRUCTION
REV. BY	REV. BY	REV. BY
DATE	DATE	DATE


PIPELINE COVER SHEET
MVP SOUTHGATE PROJECT - H-605 LINE

HORZ. SCALE:	NONE
DRAWN BY:	TRC 10/27/18
DRAFTING CK:	10/29/18
ENGINEERING CK:	
CONSTRUCTION CK:	
ENVIRONMENTAL CK:	
AFE/P.O.NO.:	
TRC PROJECT NO.:	300423
DRAWING NO.:	
PA-GEN-H-605-01	
SHEET: 1 OF 2	REV. P4
DATE OF PLOT: 10/29/2018 12:35:15 PM	

ISSUED FOR FERC SUPPLEMENTAL FILING



MVP Southgate Project H-605 Line

DRAWING INDEX

PA-GEN-H-605-01	COVER SHEET
PA-GEN-H-605-02	INDEX SHEET
<u>ALIGNMENT SHEETS</u>	
PA-PVA-H-605-01	PIPELINE ALIGNMENT, STA. 0+00 TO STA. 24+86



REV. NO.	DATE	DESCRIPTION
P1	10/27/18	ISSUED FOR FERC SUPPLEMENTAL FILING
P2	10/29/18	ISSUED FOR FERC SUPPLEMENTAL FILING
P3	10/29/18	ISSUED FOR FERC SUPPLEMENTAL FILING
P4	10/29/18	ISSUED FOR FERC SUPPLEMENTAL FILING

APPROVED FOR FERC	APPROVED FOR BIDDING	APPROVED FOR CONSTRUCTION
REV. BY	REV. BY	REV. BY
DATE	DATE	DATE

Mountain Valley
PIPELINE LLC
PIPELINE INDEX SHEET
MVP SOUTHGATE PROJECT - H-605 LINE

HORIZ. SCALE:	NONE
DRAWN BY:	TRC 10/27/18
DRAFTING CK:	10/29/18
ENGINEERING CK:	
CONSTRUCTION CK:	
ENVIRONMENTAL CK:	
AFE/P.O. NO.:	
TRC PROJECT NO.:	300423
DRAWING NO.:	PA-GEN-H-605-02
SHEET:	2 OF 2 REV. P4
DATE OF PLOT:	9/27/2019 11:09:31 AM

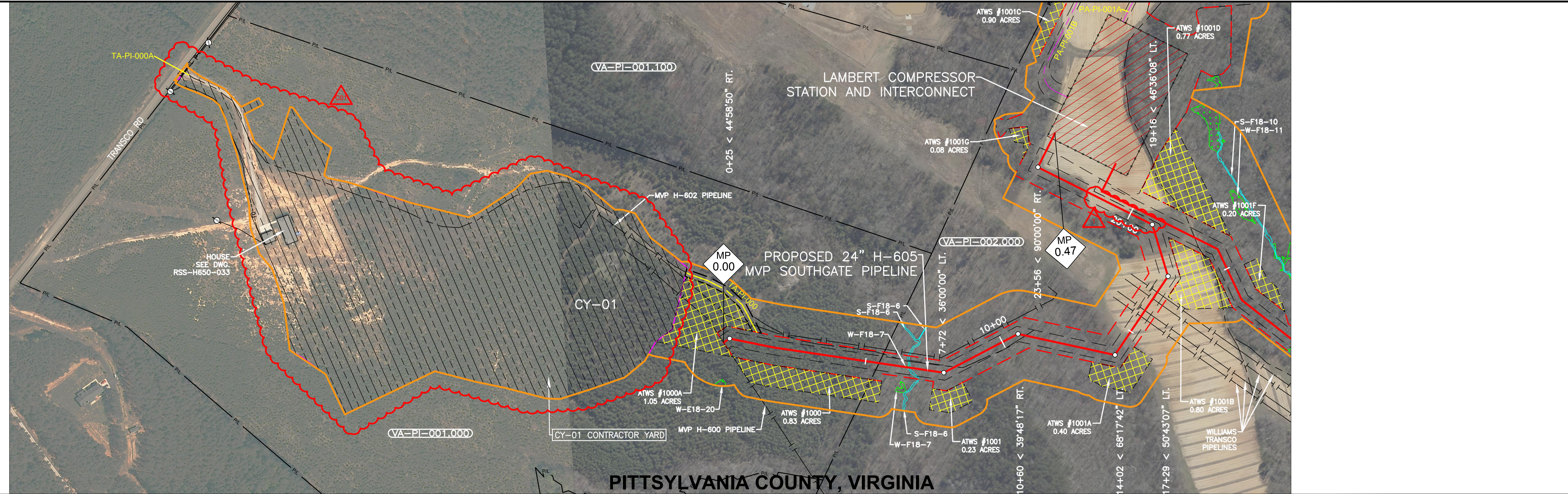
ISSUED FOR FERC SUPPLEMENTAL FILING

RIGHT-OF-WAY & OWNERSHIP DATA		0+00	VA-PI-001.000	5+47	VA-PI-002.000	24+86
DESIGN		0+00	547 LF	5+47	1939 LF	24+86
PIPE / COATING					2	
SLOPE DISTANCE						
CLASS LOCATION / HCA					1	
ENVIRONMENTAL						
CONSTRUCTION EXCLUSION						
WETLAND / STREAM			W-F18-7 11 LF	S-F18-6 6 LF		

PLAN VIEW

LEGEND

- STUDY CORRIDOR
- PROPOSED PIPELINE
- NON-SURVEYED C/L
- EXISTING PIPELINE
- PERMANENT EASEMENT
- WORK SPACE LIMITS
- PERMANENT ACCESS RD
- TEMPORARY ACCESS RD
- COUNTY LINE
- PROPERTY LINE
- ROAD RIGHT-OF-WAY
- FENCE LINE
- BURIED FIBER OPTIC
- OVERHEAD POWER
- OVERHEAD TELEPHONE
- C/L ROAD
- C/L RAILROAD
- DELINEATED STREAM
- DELINEATED WETLAND
- PI SYMBOL
- MAILBOX
- LINE MARKER - VENT PIPE
- POWERTELE POLE
- TOWER LEG
- GAS VALVE
- WELL - WATER
- POST - GATE/FENCE
- ELECTROSWITCH METER
- PEDESTAL UTILITY
- MH - SANITARY WATER
- MAINLINE VALVE
- ADD ENTRY/EXIT
- ADDITIONAL TEMPORARY WORK SPACE(ATWS)
- ABOVE GROUND FACILITY
- CONTRACTOR YARD



REFERENCE DRAWINGS

DRAWING NO.	DESCRIPTION
C:\LAM-1100-01	LAMBERT COMPRESSOR STATION
PA-PIVA-H-650-01	ALIGNMENT SHEET
RSS-H650-033	RESIDENTIAL SITE SPECIFIC

HORIZONTAL STATIONING

WORK SPACE

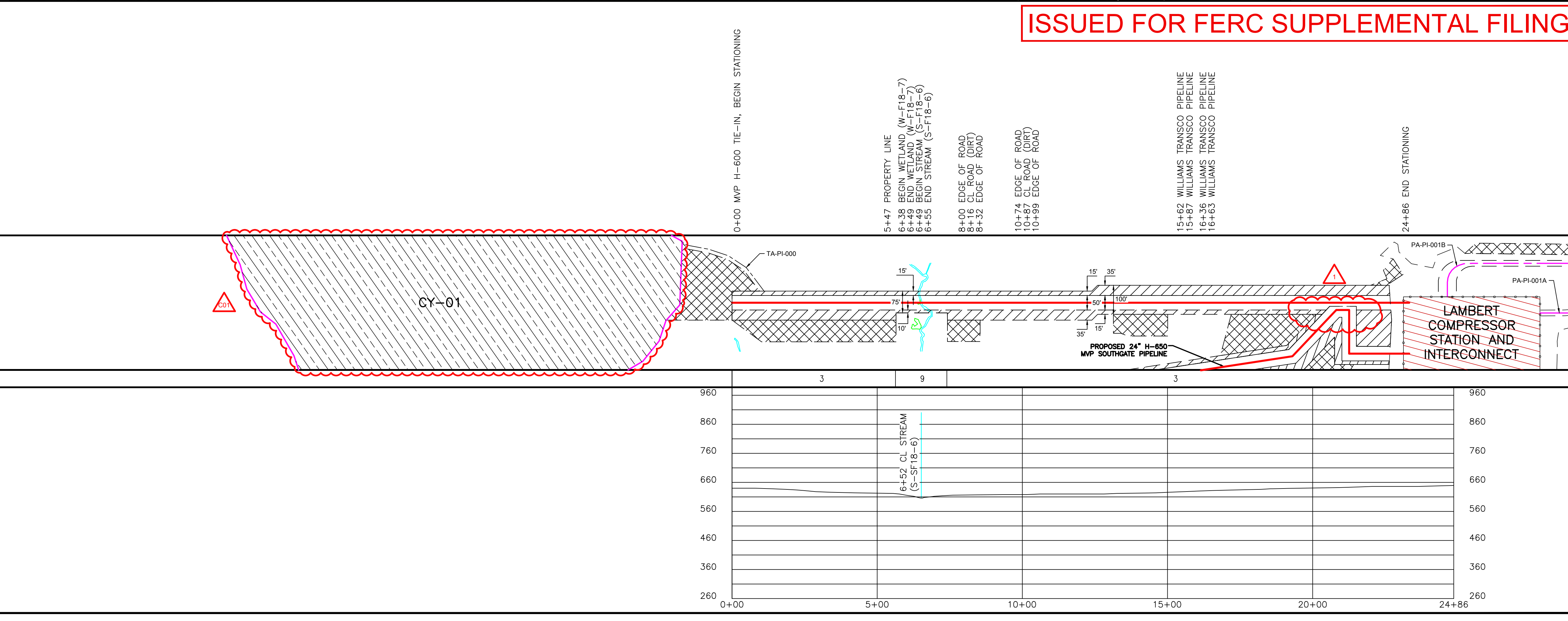
- PROPOSED PIPELINE
- EXISTING PIPELINE
- ACCESS ROAD
- TEMPORARY WORK SPACE
- PERMANENT EASEMENT
- TEMPORARY WORK SPACE(TWS)
- ADD. TEMPORARY WORK SPACE(ATWS)

CONSTRUCTION METHOD

CONSTRUCTION METHOD KEY

- 5 - NON-PARALLEL CONSTRUCTION WITH TOP SOIL SEGREGATION
- 5 - ROAD X-ING BORED
- 7 - RAILROAD X-ING BORED
- 9 - WATERBODY X-ING OPEN CUT - FLUME
- 12 - HORIZONTAL DIRECTIONAL DRILL (HDD)
- 13 - PARALLEL TO POWER LINES
- 17 - PARALLEL TO FOREIGN LINES
- 25 - ROAD X-ING BORED WITH PARALLEL PIPELINES
- 27 - RAILROAD X-ING BORED WITH PARALLEL PIPELINES
- 29 - WATERBODY X-ING WITH PARALLEL PIPELINES OPEN CUT - FLUME

PROFILE



ISSUED FOR FERC SUPPLEMENTAL FILING

TRC
Results you can rely on

REVISIONS

REV. BY	DATE	DESCRIPTION
P1	10/22/18	ISSUED FOR CLIENT REVIEW
P2	11/02/18	ISSUED FOR FERC SUPPLEMENTAL FILING
P4	10/14/19	ISSUED FOR FERC SUPPLEMENTAL FILING

MATERIAL SUMMARY

MATERIAL	QTY.	DESCRIPTION
2486 LF	2	24" O.D. X 0.412 W.T. X-70 FBE

APPROVED FOR CONSTRUCTION

APPROVED FOR BIDDING

APPROVED FOR FERC

Mountain Valley PIPELINE LLC

PIPELINE ALIGNMENT

MVP SOUTHGATE PROJECT - H-605 LINE

PITTSYLVANIA COUNTY, VIRGINIA

STA. 0+00 TO STA. 24+86

HORIZ. SCALE: 1" = 200'

DRAWN BY: TRC 10/22/18

DRAFTING CK:

ENGINEERING CK:

CONSTRUCTION CK:

ENVIRONMENTAL CK:

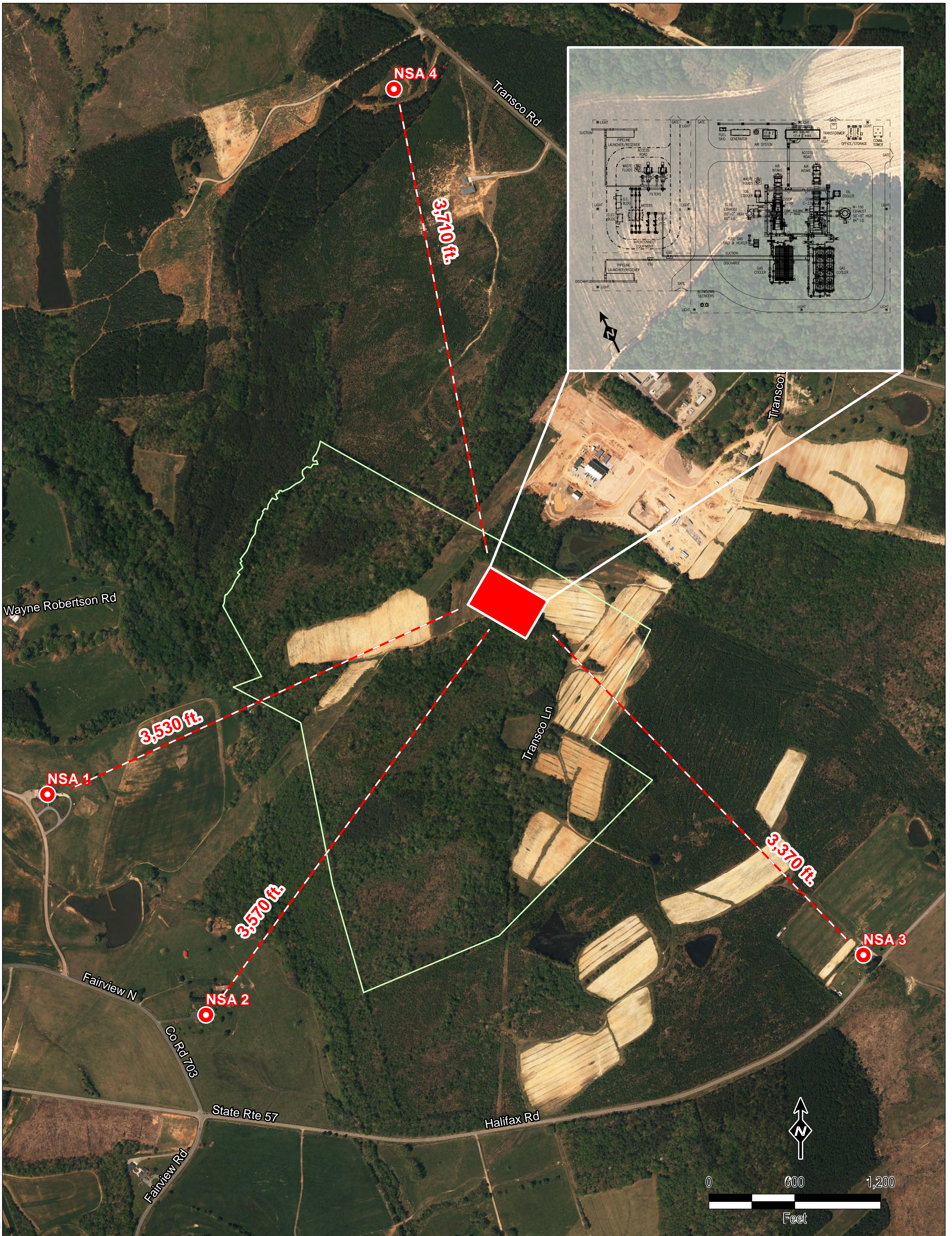
AFE/PO NO.:

TRC PROJECT NO.: 300423

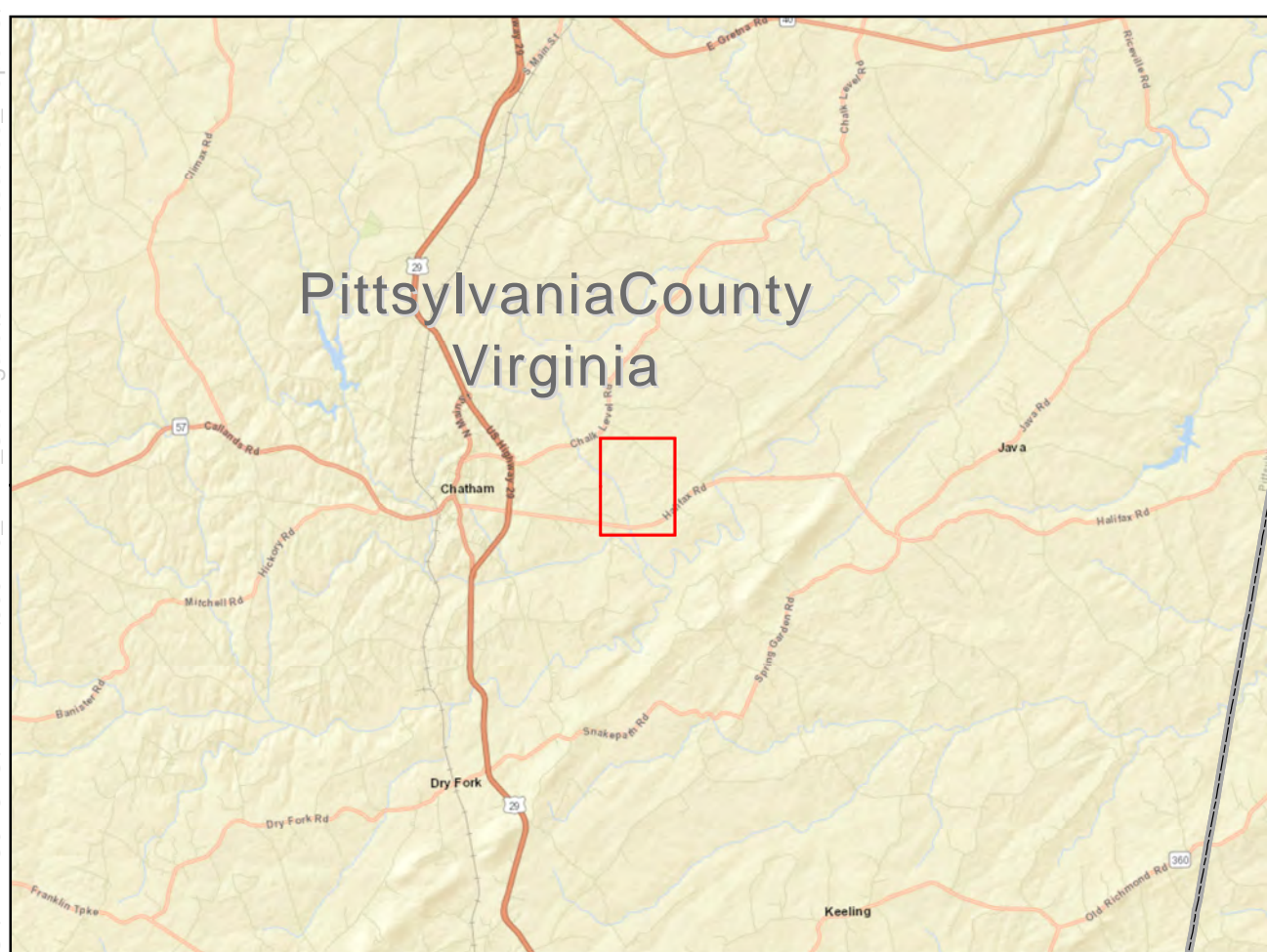
DRAWING NO.: **PA-PIVA-H-605-01**

SHEET: 1 OF 1 REV. P4

DATE OF PLOT: 10/9/2019 5:11:19 PM



S:\4\PROJECTS\NEVERTER\300423_MVP_Southern\64\AMD\Resources_Reports\0911\Enr_1_A_Lambert_CS_NSA_Plan_MAR_2019.mxd



Legend

- Lambert Compressor Station & Interconnect
- Noise Sensitive Area
- Approximate Parcel

Data Sources: ESRI, USGS, SLR, EQT

1 inch = 300 feet
When Printed ARCH D





Figure 1A

Lambert Compressor Station & Interconnect



600 Willowbrook Ln
West Chester, PA 19382
March 2019