

Legend

- Mileposts
- H-650 Pipeline
- ▭ Limits of Construction Right-of-Way
- ▭ Survey Area
- State Removed Resources
- Approximated Soil Survey Stream
- Approximated Surface Water Top Of Bank
- Approximated Stream Centerline
- Delineated Surface Water Top Of Bank
- Delineated Stream Centerline
- Approximated Surface Water
- Delineated Surface Water
- Delineated Wetland Boundary
- Approximated Wetland
- Delineated Wetland
- ▭ County Boundary

Data Sources: EOT, ESRI, NC OneMap, TRC, USGS
 Basemap: Published Soil Survey Maps

1 inch = 500 feet
 When Printed 11x17

Mountain Valley PIPELINE LLC

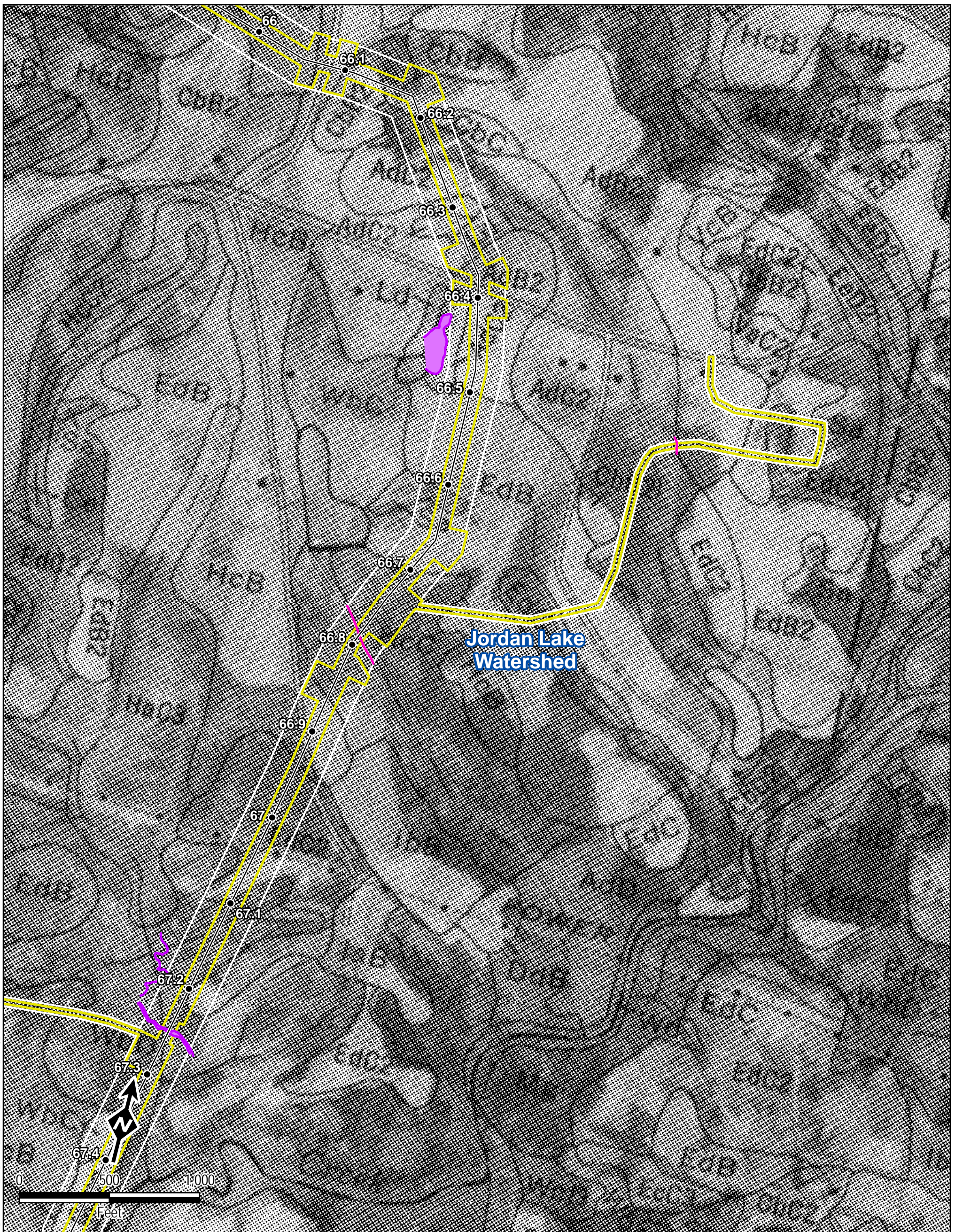
Section 404/401 Permit Application

Jordan Lake Watershed
 Published Soil Survey
 Response to Additional Information

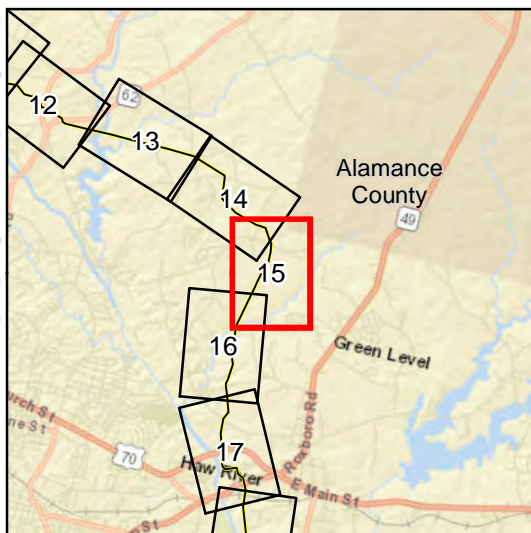
Alamance County, NC
 Sheet 14 of 22

TRC
 Results you can rely on

600 Willowbrook Ln
 West Chester, PA 19382
 Date: February 2019



Jordan Lake Watershed



Legend

- Mileposts
- H-650 Pipeline
- ▭ Limits of Construction Right-of-Way
- ▭ Survey Area
- State Removed Resources
- Approximated Soil Survey Stream
- Approximated Surface Water Top Of Bank
- Approximated Stream Centerline
- Delineated Surface Water Top Of Bank
- Delineated Stream Centerline
- ▭ Approximated Surface Water
- ▭ Delineated Surface Water
- Delineated Wetland Boundary
- ▭ Approximated Wetland
- ▭ Delineated Wetland
- ▭ County Boundary

Data Sources: EQT, ESRI, NC OneMap, TRC, USGS
 Basemap: Published Soil Survey Maps

1 inch = 500 feet
 When Printed 11x17



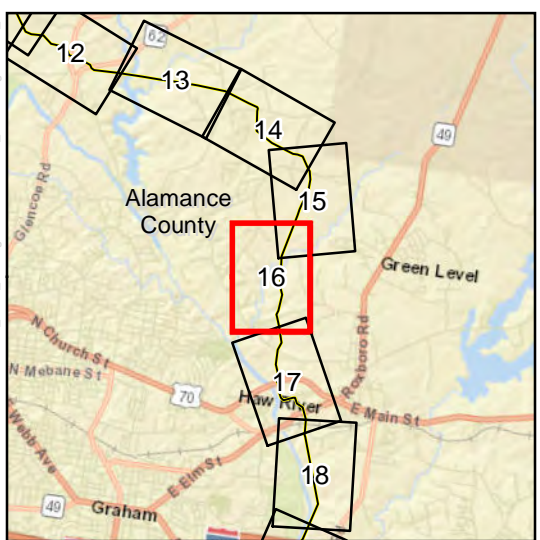
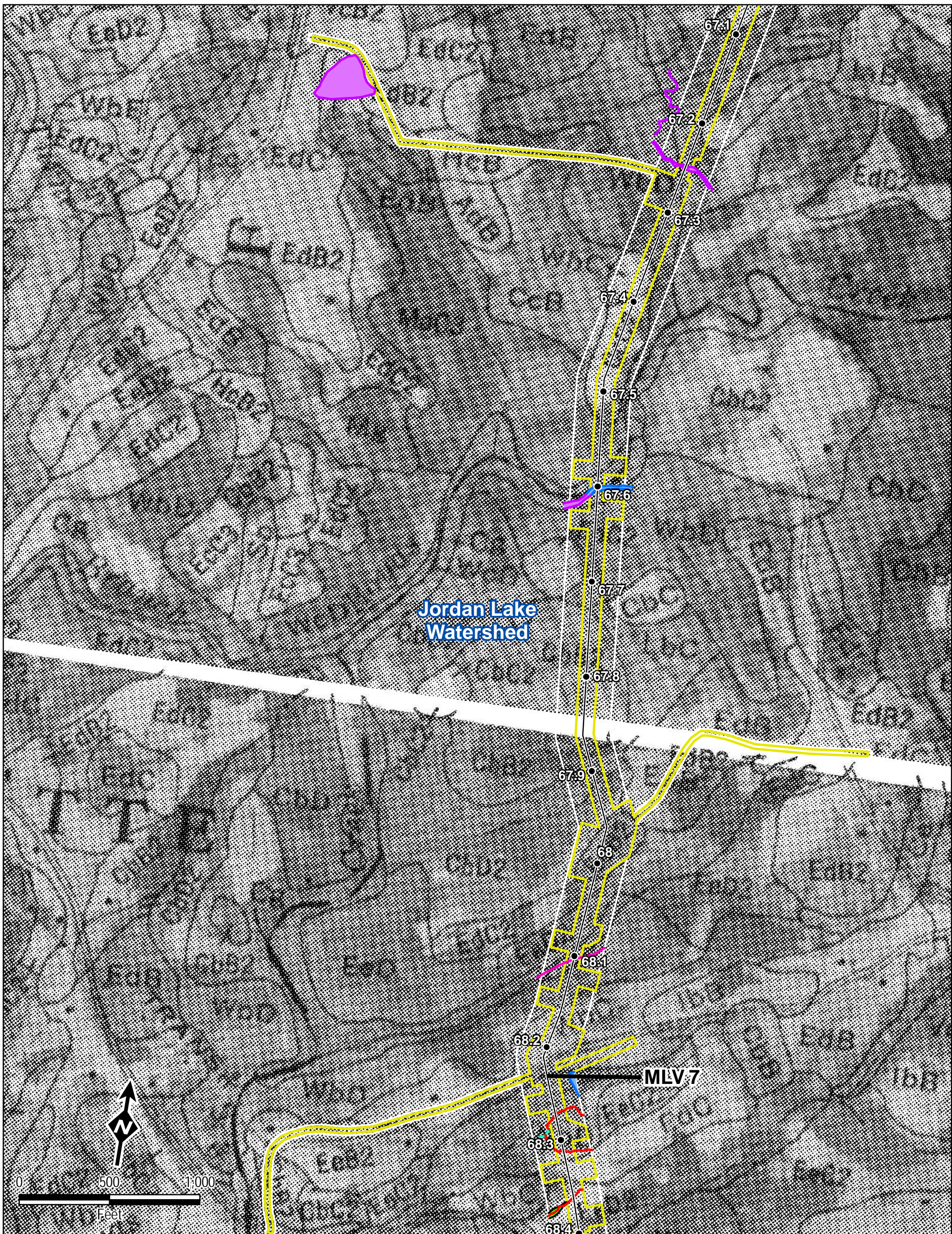
Section 404/401 Permit Application

Jordan Lake Watershed
 Published Soil Survey
 Response to Additional Information

Alamance County, NC
 Sheet 15 of 22



600 Willowbrook Ln
 West Chester, PA 19382
 Date: February 2019



Legend

- Mileposts
- H-650 Pipeline
- ▭ Limits of Construction Right-of-Way
- ▭ Survey Area
- State Removed Resources
- Approximated Soil Survey Stream
- Approximated Surface Water Top Of Bank
- Approximated Stream Centerline
- Delineated Surface Water Top Of Bank
- Delineated Stream Centerline
- Approximated Surface Water
- Delineated Surface Water
- Delineated Wetland Boundary
- Approximated Wetland
- Delineated Wetland
- ▭ County Boundary

Data Sources: EQT, ESRI, NC OneMap, TRC, USGS
 Basemap: Published Soil Survey Maps

1 inch = 500 feet
 When Printed 11x17

Mountain Valley PIPELINE LLC

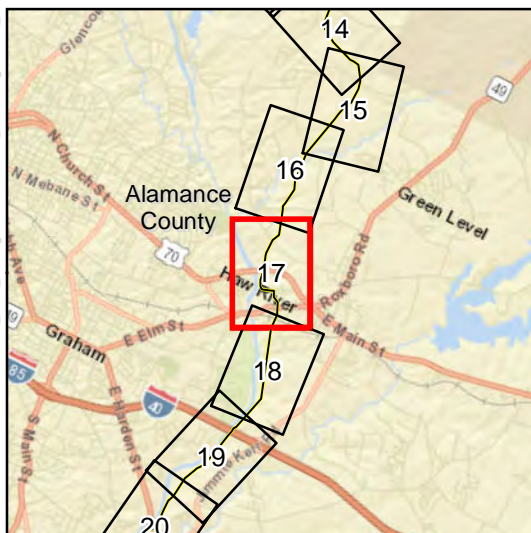
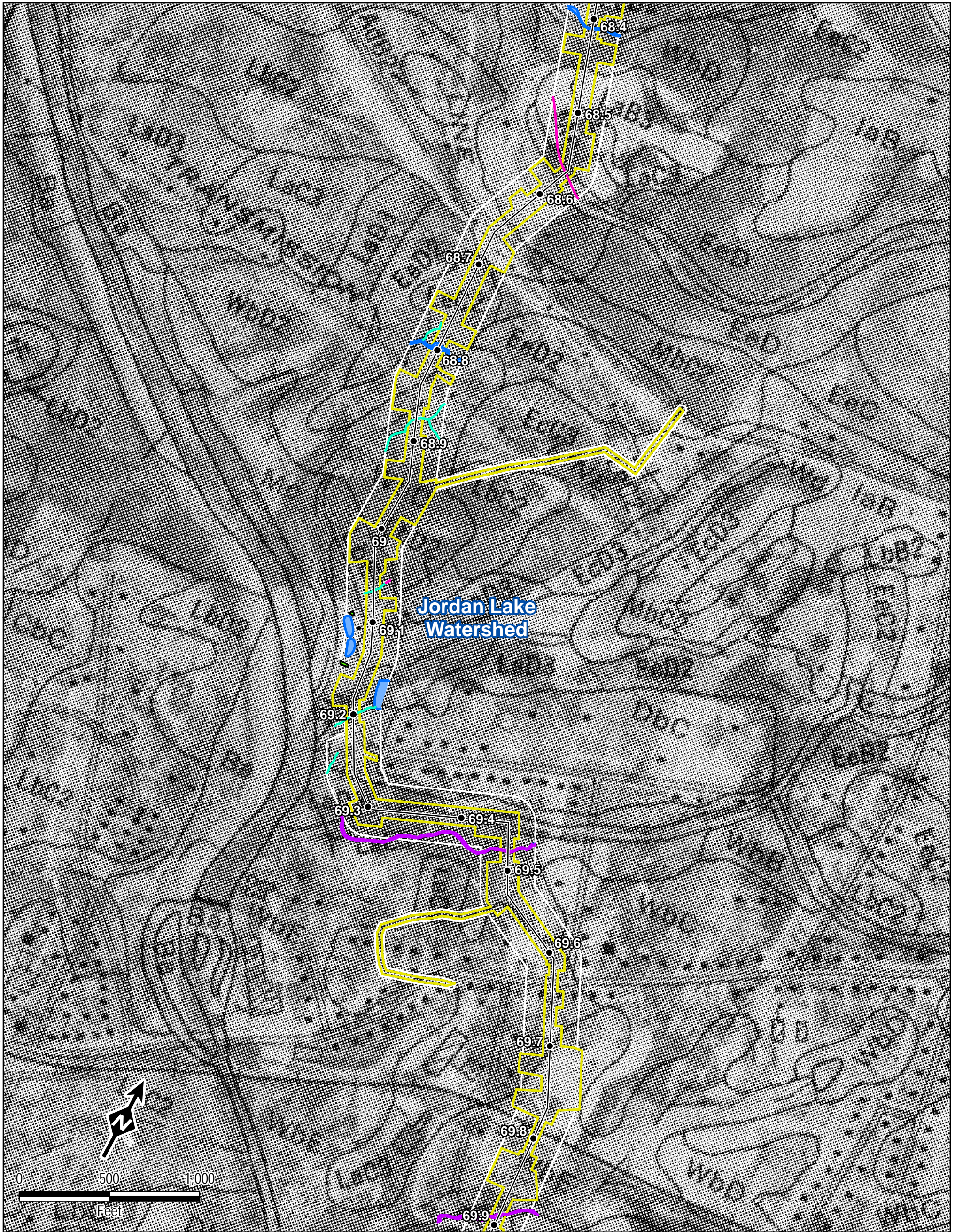
Section 404/401 Permit Application

Jordan Lake Watershed
 Published Soil Survey
 Response to Additional Information

Alamance County, NC
 Sheet 16 of 22

TRC
 Results you can rely on

600 Willowbrook Ln
 West Chester, PA 19382
 Date: February 2019



Legend

- Mileposts
- H-650 Pipeline
- ▭ Limits of Construction Right-of-Way
- ▭ Survey Area
- State Removed Resources
- Approximated Soil Survey Stream
- Approximated Surface Water Top Of Bank
- Approximated Stream Centerline
- Delineated Surface Water Top Of Bank
- Delineated Stream Centerline
- Approximated Surface Water
- Delineated Surface Water
- Delineated Wetland Boundary
- Approximated Wetland
- Delineated Wetland
- ▭ County Boundary

Data Sources: EQT, ESRI, NC OneMap, TRC, USGS
 Basemap: Published Soil Survey Maps

1 inch = 500 feet
 When Printed 11x17



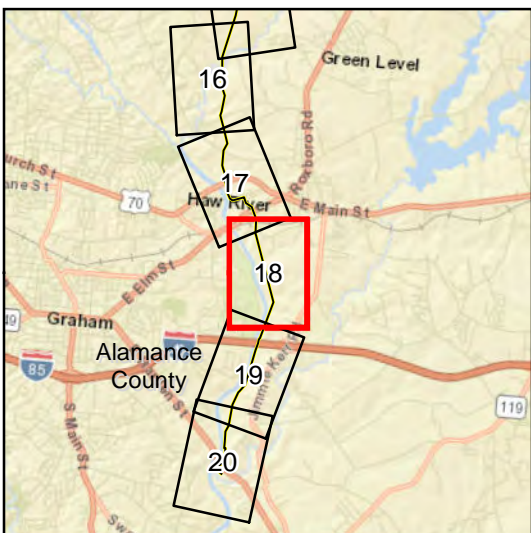
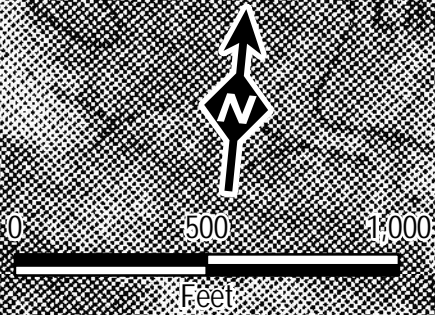
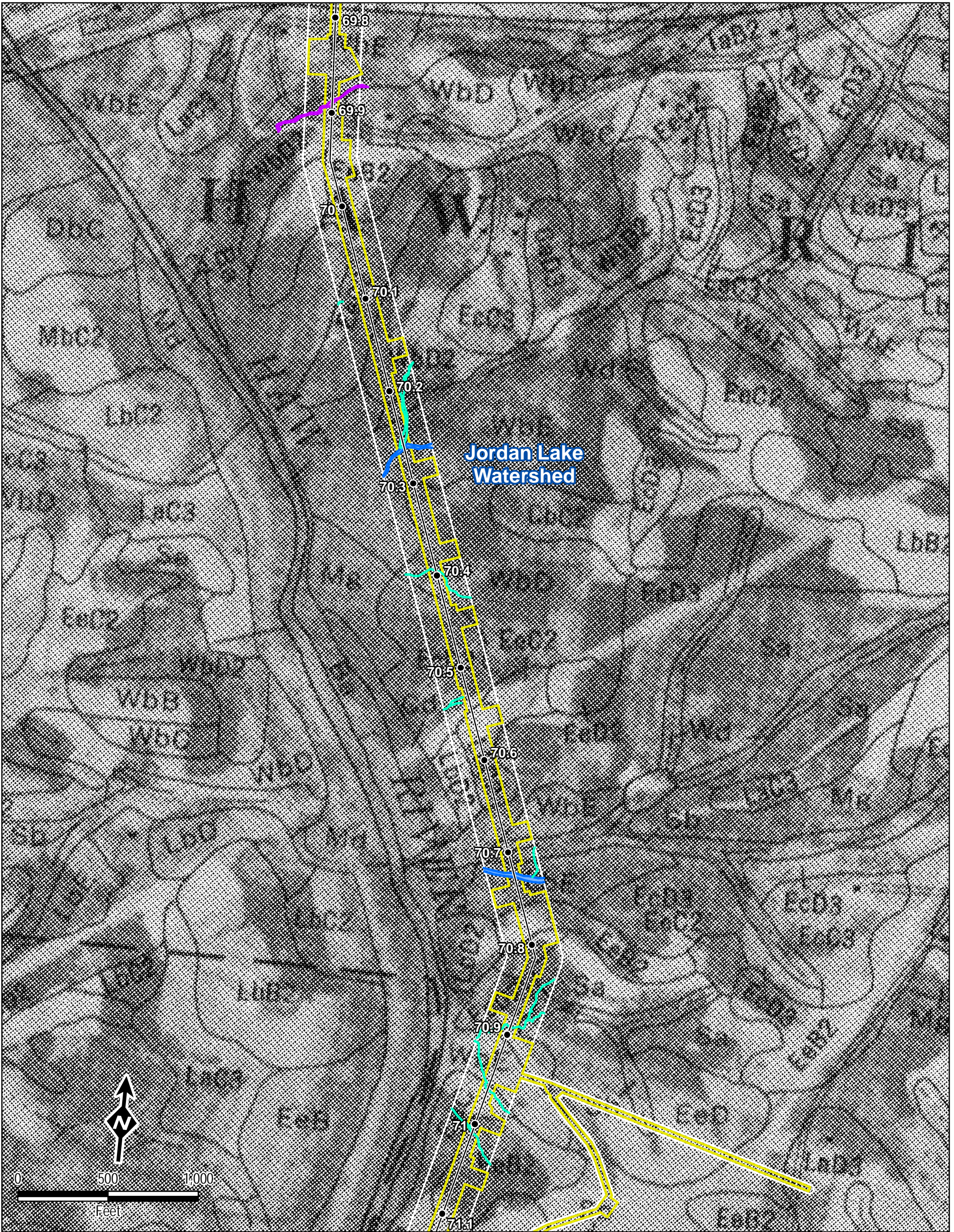
Section 404/401 Permit Application

Jordan Lake Watershed
 Published Soil Survey
 Response to Additional Information

Alamance County, NC
 Sheet 17 of 22



600 Willowbrook Ln
 West Chester, PA 19382
 Date: February 2019



Legend

- Mileposts
- H-650 Pipeline
- ▭ Limits of Construction Right-of-Way
- ▭ Survey Area
- State Removed Resources
- Approximated Soil Survey Stream
- Approximated Surface Water Top Of Bank
- Approximated Stream Centerline
- Delineated Surface Water Top Of Bank
- Delineated Stream Centerline
- Approximated Surface Water
- Delineated Surface Water
- Delineated Wetland Boundary
- Approximated Wetland
- Delineated Wetland
- ▭ County Boundary

Data Sources: EQT, ESRI, NC OneMap, TRC, USGS
 Basemap: Published Soil Survey Maps

1 inch = 500 feet
 When Printed 11x17

Mountain Valley
 PIPELINE LLC

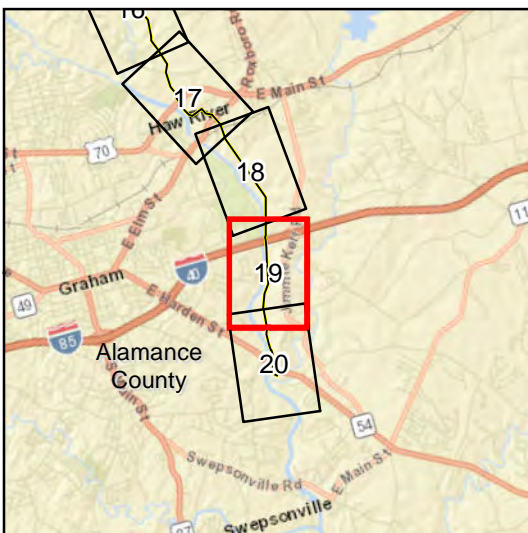
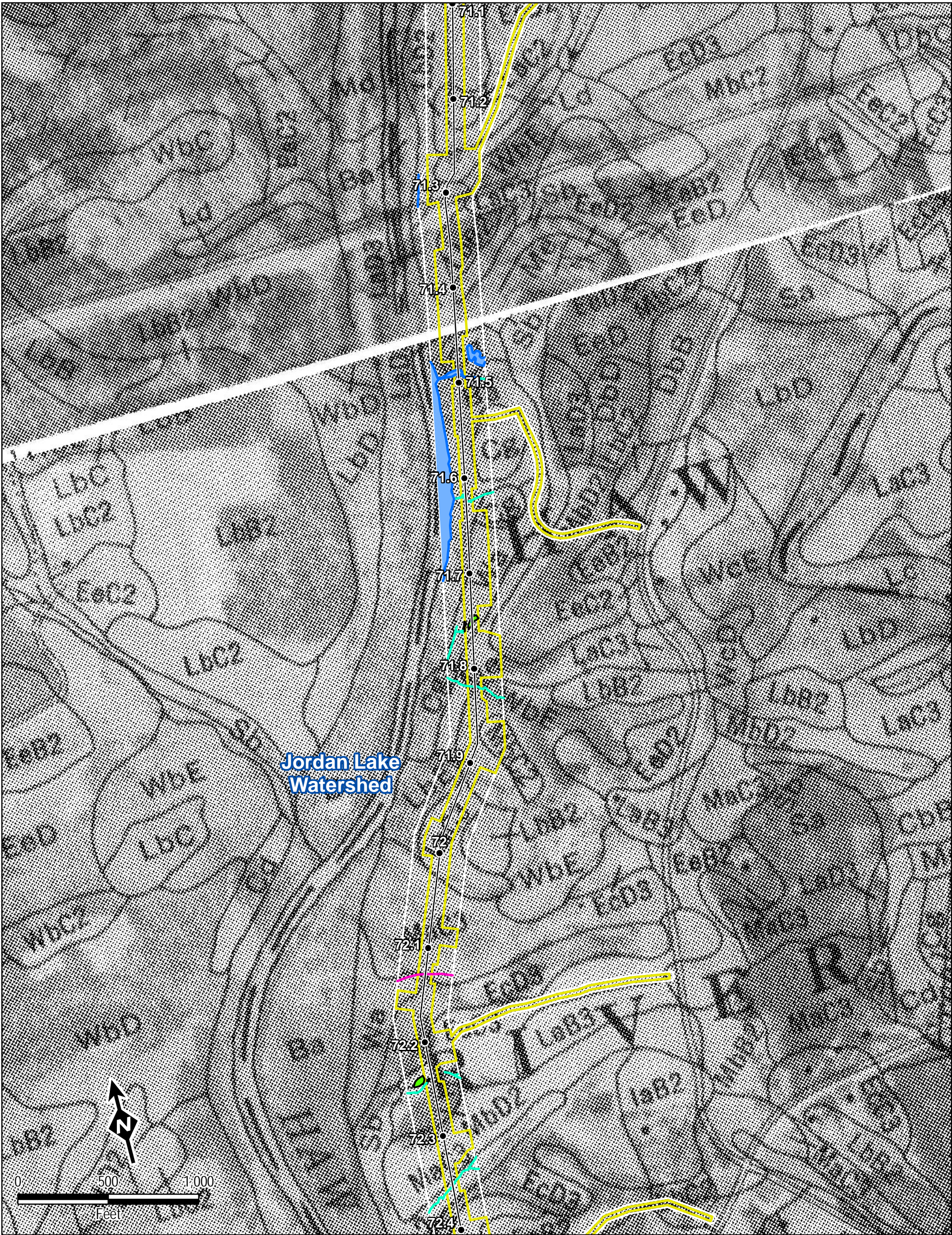
Section 404/401 Permit Application

Jordan Lake Watershed
 Published Soil Survey
 Response to Additional Information

Alamance County, NC
 Sheet 18 of 22

TRC
 Results you can rely on

600 Willowbrook Ln
 West Chester, PA 19382
 Date: February 2019



Legend

- Mileposts
- H-650 Pipeline
- ▭ Limits of Construction Right-of-Way
- ▭ Survey Area
- State Removed Resources
- Approximated Soil Survey Stream
- Approximated Surface Water Top Of Bank
- Approximated Stream Centerline
- Delineated Surface Water Top Of Bank
- Delineated Stream Centerline
- Approximated Surface Water
- Delineated Surface Water
- Delineated Wetland Boundary
- Approximated Wetland
- Delineated Wetland
- ▭ County Boundary

Data Sources: EOT, ESRI, NC OneMap, TRC, USGS
 Basemap: Published Soil Survey Maps

1 inch = 500 feet
 When Printed 11x17

Mountain Valley PIPELINE LLC

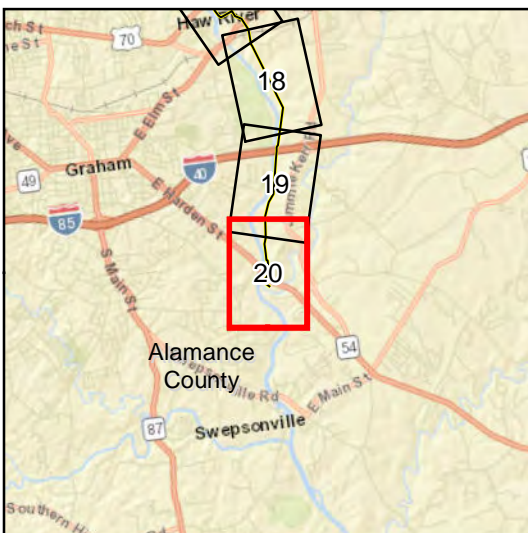
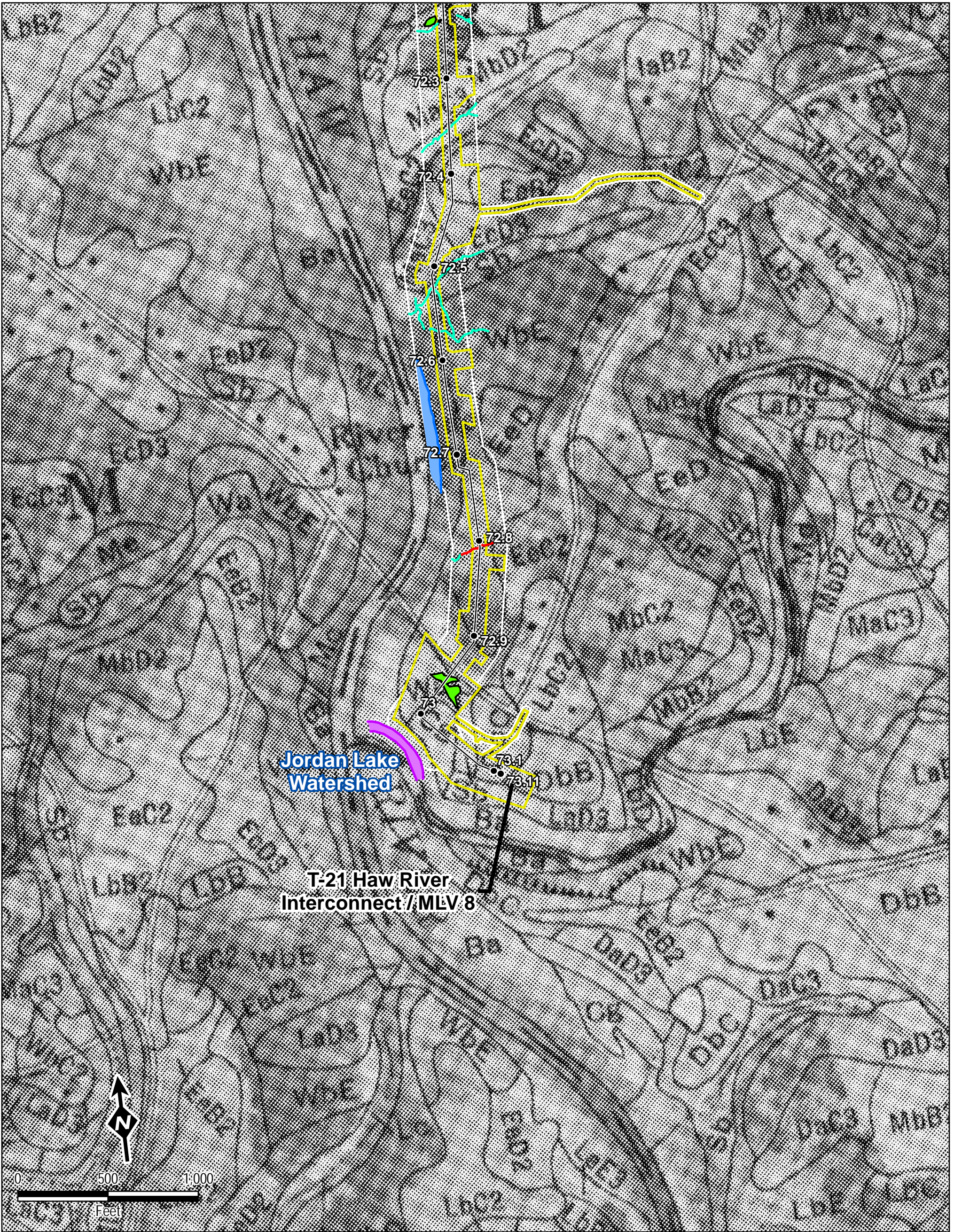
Section 404/401 Permit Application

Jordan Lake Watershed
 Published Soil Survey
 Response to Additional Information

Alamance County, NC
 Sheet 19 of 22

TRC
 Results you can rely on

600 Willowbrook Ln
 West Chester, PA 19382
 Date: February 2019



Legend

- Mileposts
- H-650 Pipeline
- ▭ Limits of Construction Right-of-Way
- ▭ Survey Area
- State Removed Resources
- Approximated Soil Survey Stream
- Approximated Surface Water Top Of Bank
- Approximated Stream Centerline
- Delineated Surface Water Top Of Bank
- Delineated Stream Centerline
- ▭ Approximated Surface Water
- ▭ Delineated Surface Water
- Delineated Wetland Boundary
- ▭ Approximated Wetland
- ▭ Delineated Wetland
- ▭ County Boundary

Data Sources: EQT, ESRI, NC OneMap, TRC, USGS
 Basemap: Published Soil Survey Maps

1 inch = 500 feet
 When Printed 11x17



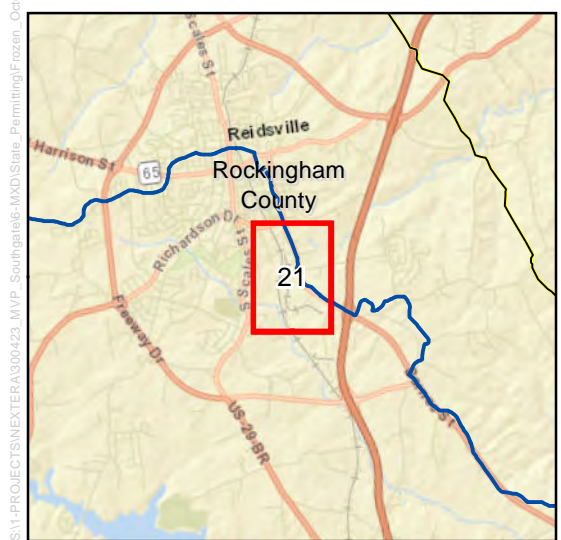
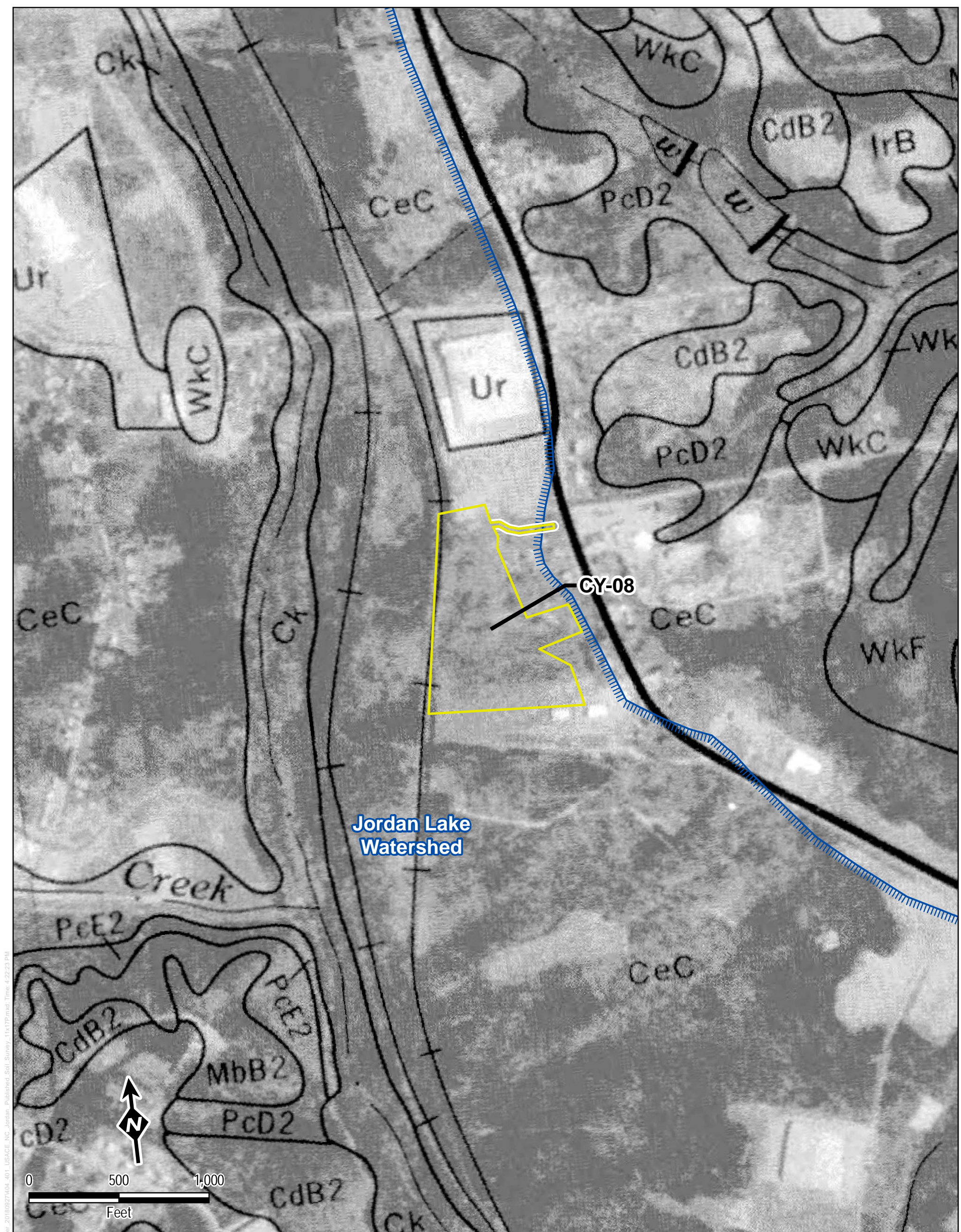
Section 404/401 Permit Application

Jordan Lake Watershed
 Published Soil Survey
 Response to Additional Information

Alamance County, NC
 Sheet 20 of 22



600 Willowbrook Ln
 West Chester, PA 19382
 Date: February 2019



Legend

- Mileposts
- ▭ Limits of Construction Right-of-Way
- ▭ Survey Area
- State Removed Resources
- Approximated Soil Survey Stream
- Approximated Surface Water Top Of Bank
- Approximated Stream Centerline
- Delineated Surface Water Top Of Bank
- Delineated Stream Centerline
- Approximated Surface Water
- Delineated Surface Water
- Delineated Wetland Boundary
- Approximated Wetland
- Delineated Wetland
- ▭ County Boundary

Data Sources: EOT, ESRI, NC OneMap, TRC, USGS
 Basemap: Published Soil Survey Maps

1 inch = 500 feet
 When Printed 11x17

Mountain Valley
 PIPELINE LLC

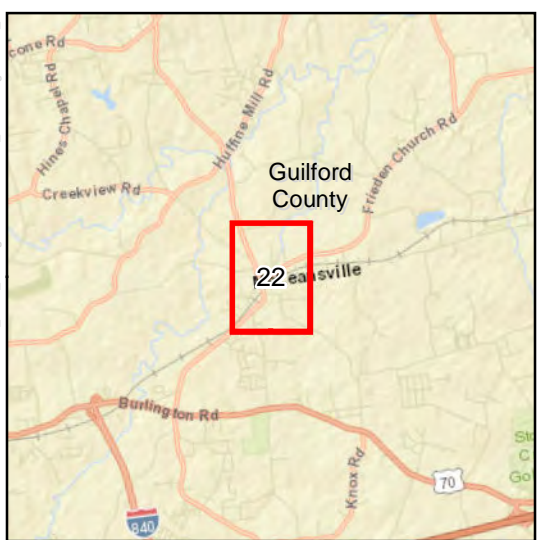
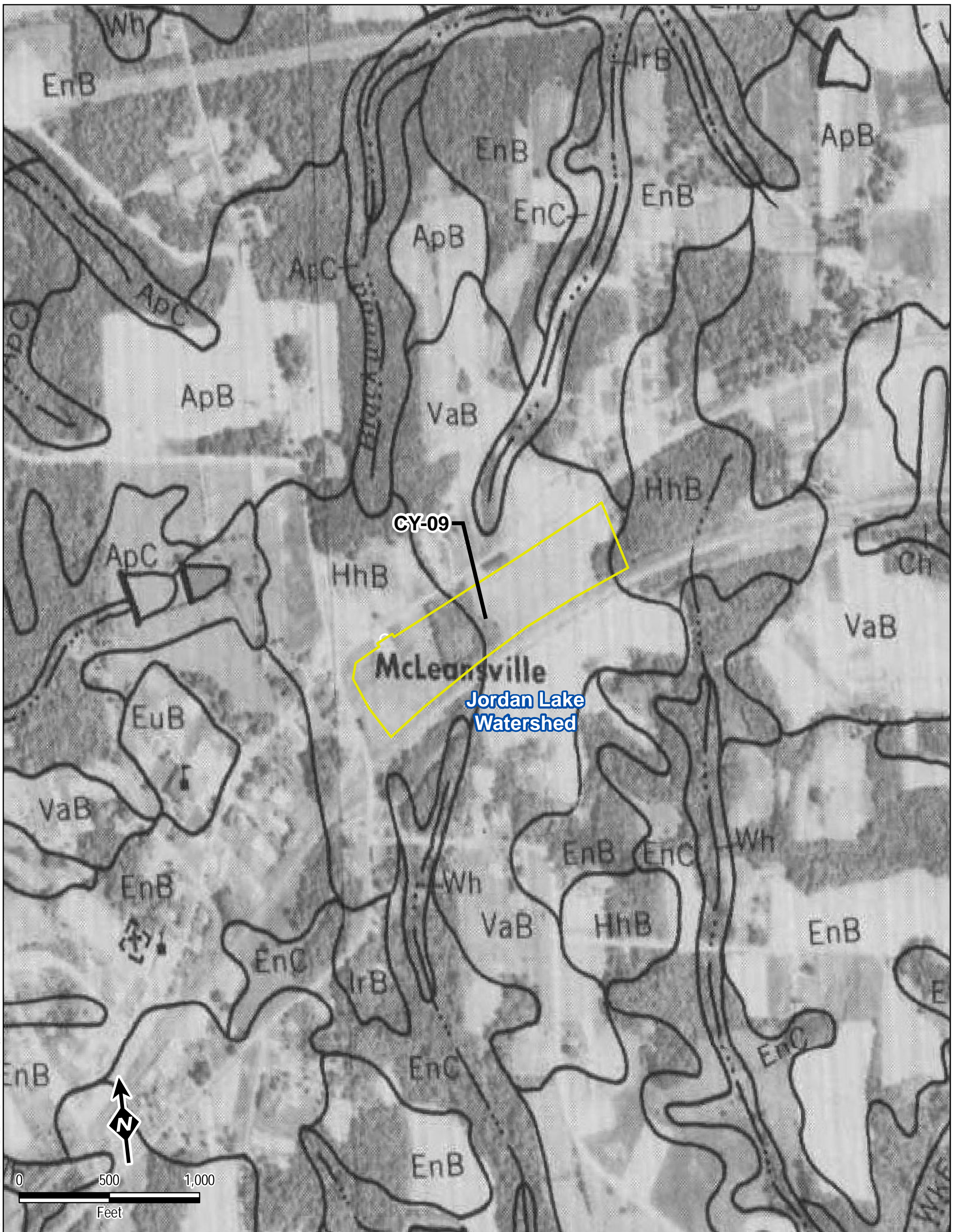
Section 404/401 Permit Application

Jordan Lake Watershed
 Published Soil Survey
 Response to Additional Information

Rockingham County, NC
 Sheet 21 of 22

TRC
 Results you can rely on

600 Willowbrook Ln
 West Chester, PA 19382
 Date: February 2019



Legend

- Mileposts
- ▭ Limits of Construction Right-of-Way
- ▭ Survey Area
- State Removed Resources
- Approximated Soil Survey Stream
- Approximated Surface Water Top Of Bank
- Approximated Stream Centerline
- Delineated Surface Water Top Of Bank
- Delineated Stream Centerline
- ▭ Approximated Surface Water
- ▭ Delineated Surface Water
- Delineated Wetland Boundary
- ▭ Approximated Wetland
- ▭ Delineated Wetland
- ▭ County Boundary

Data Sources: EOT, ESRI, NC OneMap, TRC, USGS
 Basemap: Published Soil Survey Maps

1 inch = 500 feet
 When Printed 11x17

Mountain Valley
 PIPELINE LLC

Section 404/401 Permit Application

Jordan Lake Watershed
 Published Soil Survey
 Response to Additional Information

Guilford County, NC
 Sheet 22 of 22

TRC
 Results you can rely on

600 Willowbrook Ln
 West Chester, PA 19382
 Date: February 2019

S:\PROJECTS\NEXTERA\0309423_MVP_Southern\401_USGACE_NC_Jordan_Lake\Soil_Survey\11x17\Printed_Times_42227.PM

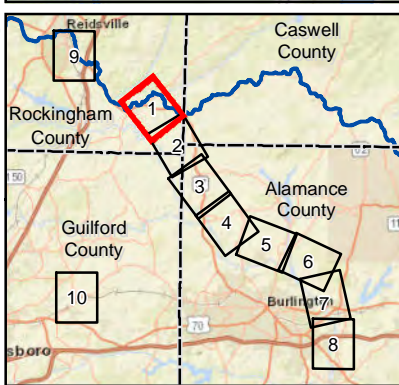
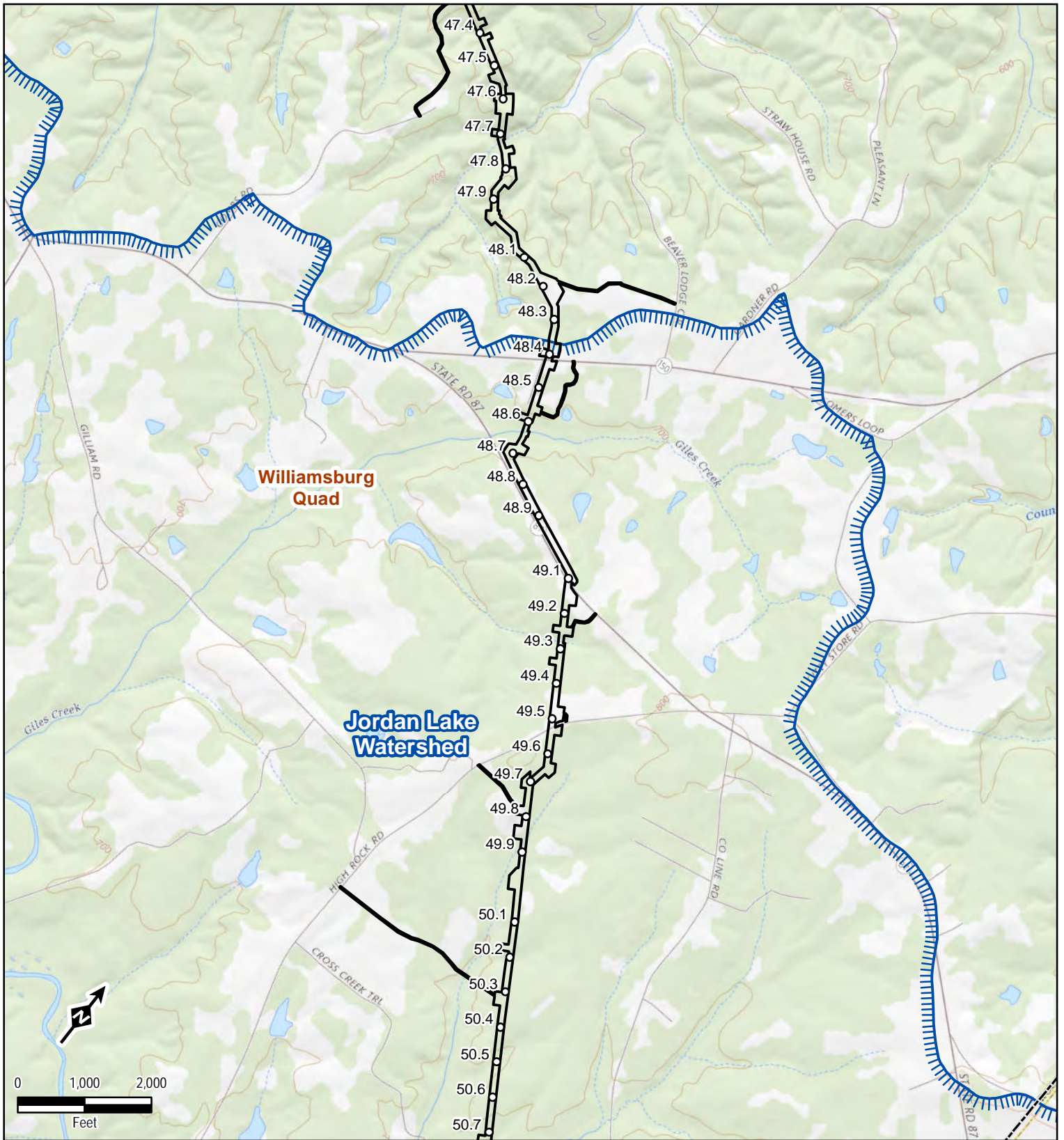


MVP Southgate Project

Attachment C Jordan Watershed USGS Topographic Maps

February 2019

SM-PROJECTS\NEXT\ERA\300423_MVP_Southgate\6-MXD\State_Permittng\Frozen_October_2018\0927\404_401_USGS_Quad_NC_Jordan_8x11P.mxd; Time: 4:29:56 PM



Legend

- Mileposts
- ▭ Limits of Construction Right-of-Way
- ▨ Jordan Lake Watershed
- ▭ USGS Topo Quad Boundary
- - - County Boundary

Data Sources: EQT, ESRI, NC OneMap, TRC, USGS
 Basemap: USGS

1 inch = 2,000 feet
 When Printed 8.5x11

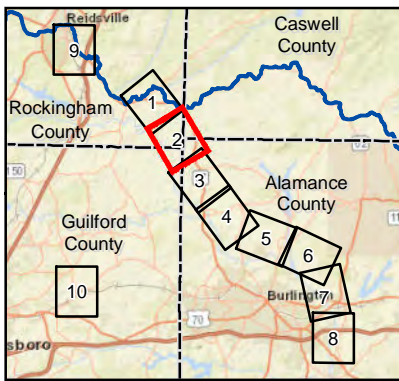
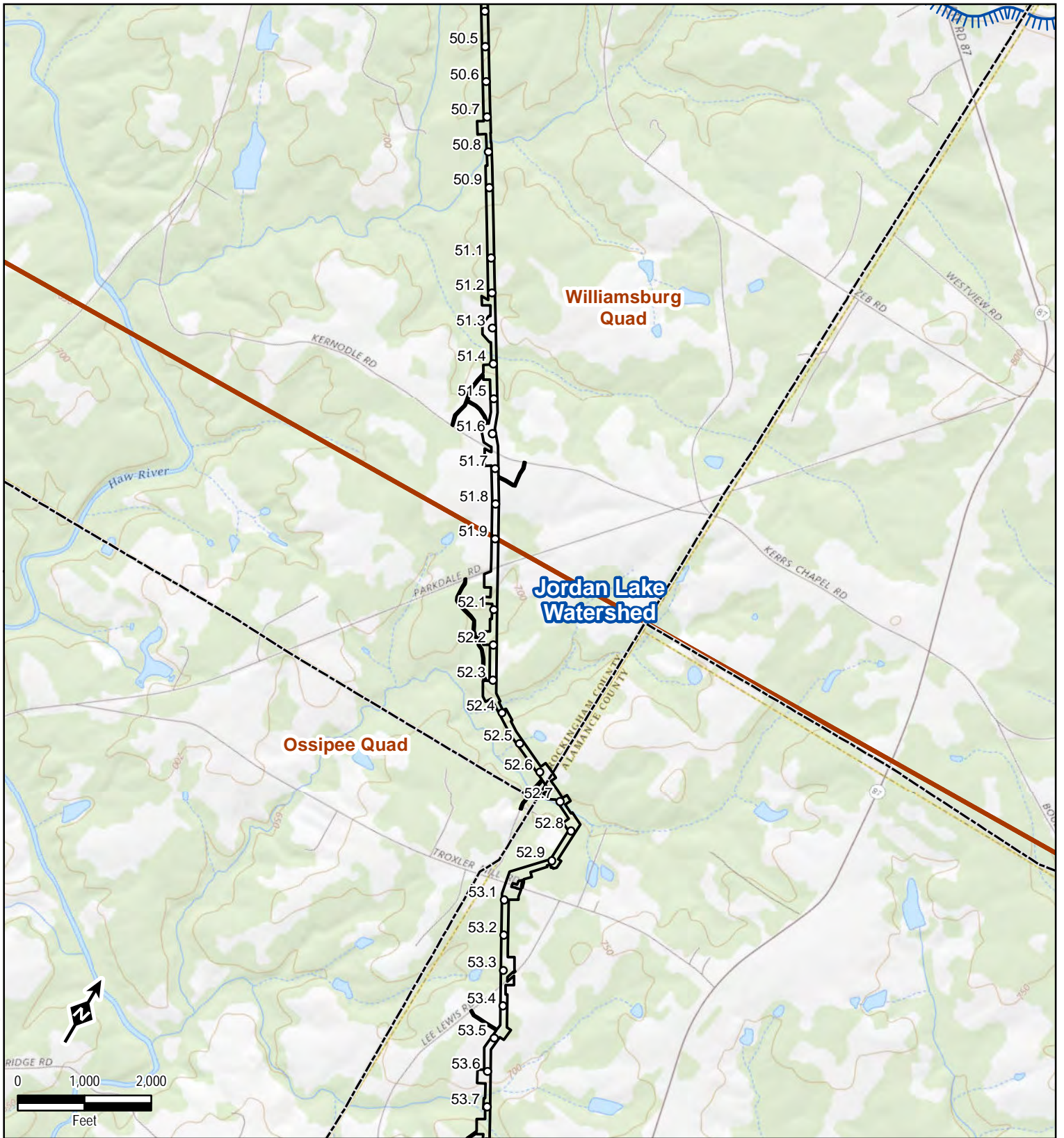
Mountain Valley
 PIPELINE LLC

Section 404/401 Permit Application
 Jordan Watershed
 USGS Topographic Quad Maps
 Response to Additional Information
 Rockingham County, NC
 Sheet 1 of 10

TRC
 Results you can rely on

600 Willowbrook Ln
 West Chester, PA 19382
 Date: February 2019

SM-PROJECTS\NEXT ERA\300423_MVP_Southgate6-MXD\State_Permitting\Frozen_October_2018\0927404_401_USGS_Quad_NC_Jordan_8x11P.mxd; Time: 4:30:15 PM



Legend

- Mileposts
- ▭ Limits of Construction Right-of-Way
- ▭ Jordan Lake Watershed
- ▭ USGS Topo Quad Boundary
- ▭ County Boundary

Data Sources: EQT, ESRI, NC OneMap, TRC, USGS
 Basemap: USGS

1 inch = 2,000 feet
 When Printed 8.5x11

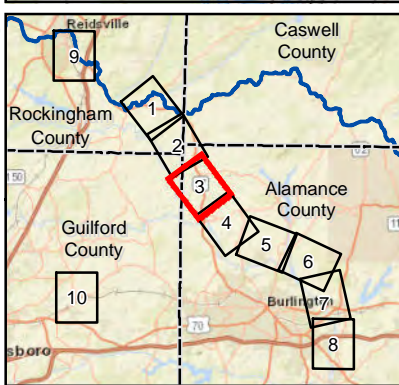
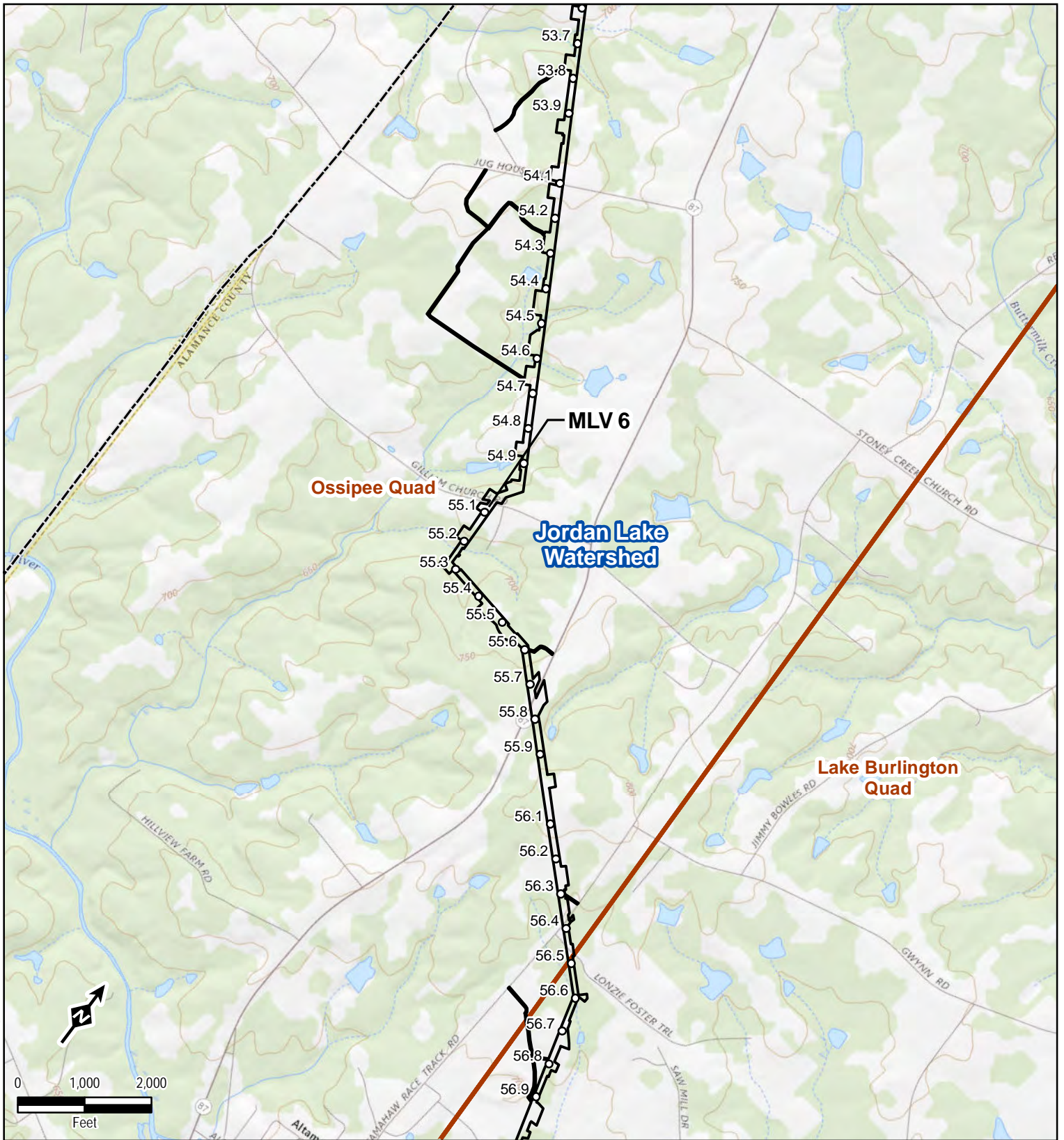
Mountain Valley
 PIPELINE LLC

Section 404/401 Permit Application
 Jordan Watershed
 USGS Topographic Quad Maps
 Response to Additional Information
 Rockingham, Guilford, & Alamance Counties, NC
 Sheet 2 of 10

TRC
 Results you can rely on

600 Willowbrook Ln
 West Chester, PA 19382
 Date: February 2019

SM-PROJECTS\NEXT\ERA\300423_MVP_Southgate\6-MXD\State_Permitting\Frozen_October_2019\0927\404_401_USGS_Quad_NC_Jordan_8x11P.mxd; Time: 4:30:18 PM



Legend

- Mileposts
- ▭ Limits of Construction Right-of-Way
- ▨ Jordan Lake Watershed
- ▭ USGS Topo Quad Boundary
- - - County Boundary

Data Sources: EQT, ESRI, NC OneMap, TRC, USGS
 Basemap: USGS

1 inch = 2,000 feet
 When Printed 8.5x11

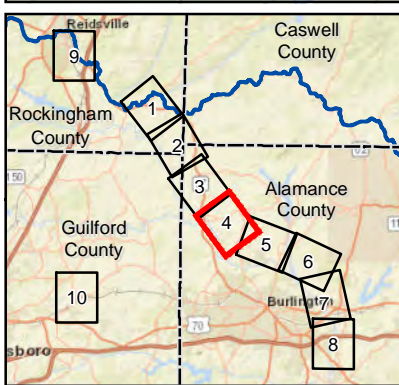
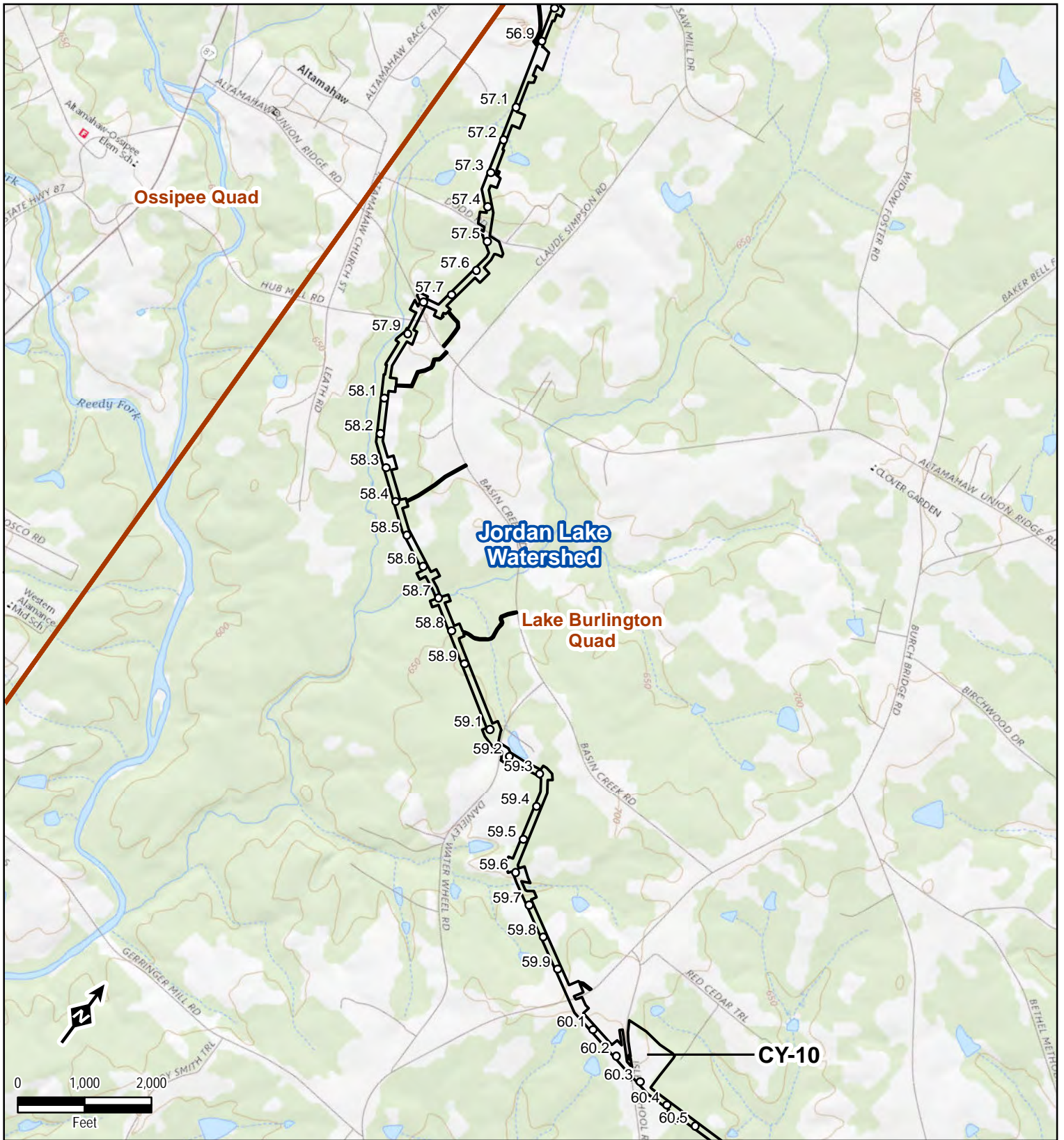
Mountain Valley
 PIPELINE, LLC

Section 404/401 Permit Application
 Jordan Watershed
 USGS Topographic Quad Maps
 Response to Additional Information
 Alamance County, NC
 Sheet 3 of 10

TRC
 Results you can rely on

600 Willowbrook Ln
 West Chester, PA 19382
 Date: February 2019

S:\1-PROJECTS\NEXT ERA\300423_MVP_Southgate\6-MXD\State_Permittin\Frozen_October_2019\0927\404_401_USGS_Quad_NC_Jordan_8x11P.mxd; Time: 4:30:21 PM



Legend

- Mileposts
- ▭ Limits of Construction Right-of-Way
- ▭ Jordan Lake Watershed
- ▭ USGS Topo Quad Boundary
- ▭ County Boundary

Data Sources: EQT, ESRI, NC OneMap, TRC, USGS
 Basemap: USGS

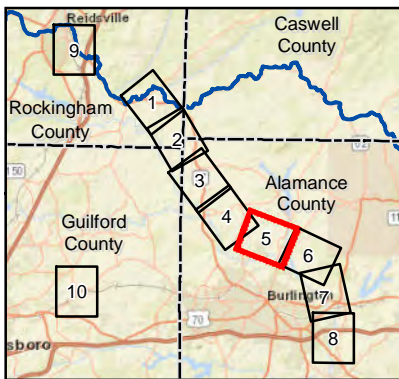
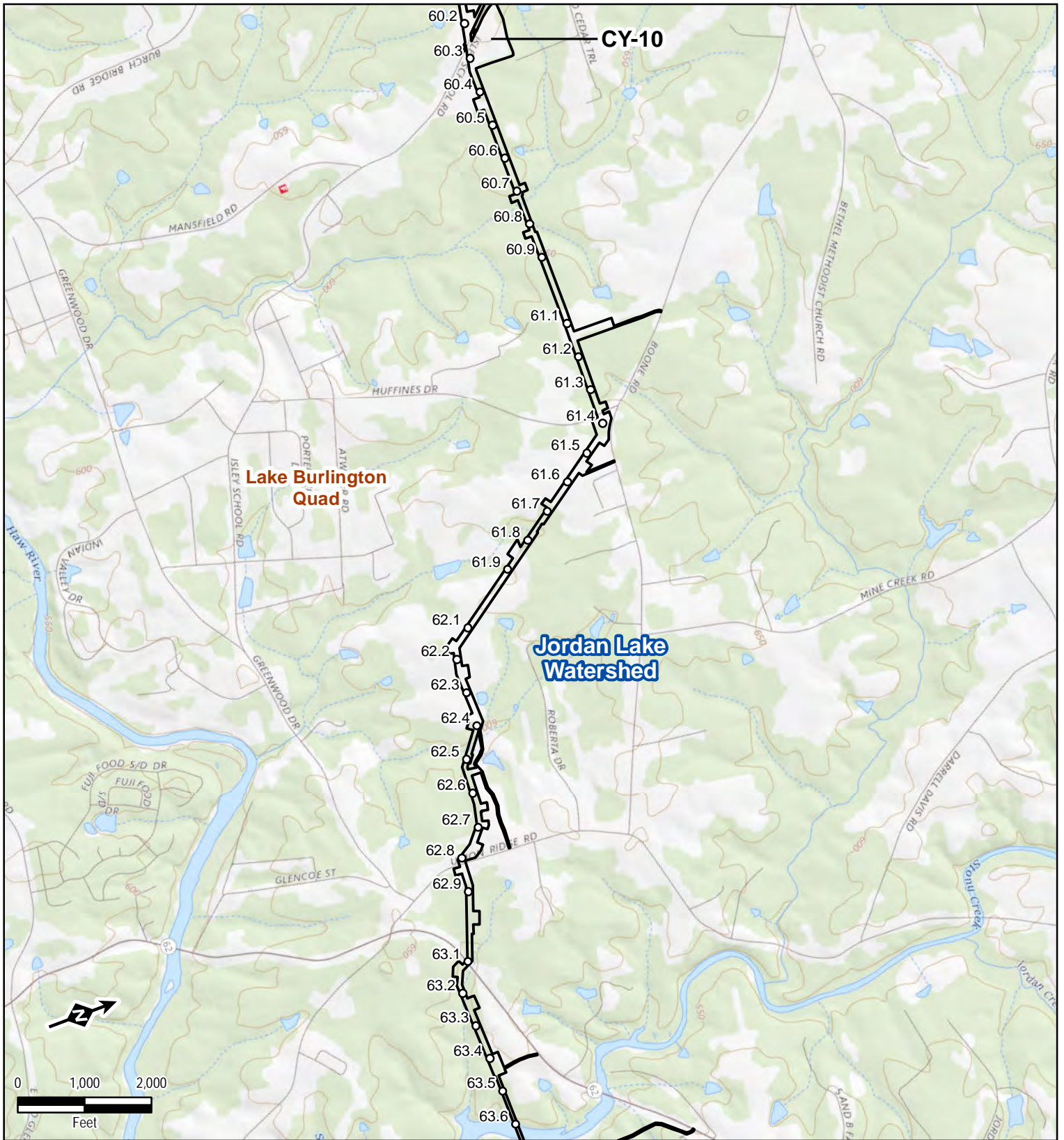
1 inch = 2,000 feet
 When Printed 8.5x11

Mountain Valley PIPELINE LLC

Section 404/401 Permit Application
 Jordan Watershed
 USGS Topographic Quad Maps
 Response to Additional Information
 Alamance County, NC
 Sheet 4 of 10

TRC Results you can rely on
 600 Willowbrook Ln
 West Chester, PA 19382
 Date: February 2019

S:\1-PROJECTS\NEXT ERA\300423_MVP_Southgate\6-MXD\State_Permitting\Frozen_October_2018\0927404_401_USGS_Quad_NC_Jordan_8x11P.mxd; Time: 4:30:24 PM



Legend

- Mileposts
- ▭ Limits of Construction Right-of-Way
- ▨ Jordan Lake Watershed
- ▭ USGS Topo Quad Boundary
- - - County Boundary

Data Sources: EQT, ESRI, NC OneMap, TRC, USGS
 Basemap: USGS

1 inch = 2,000 feet
 When Printed 8.5x11

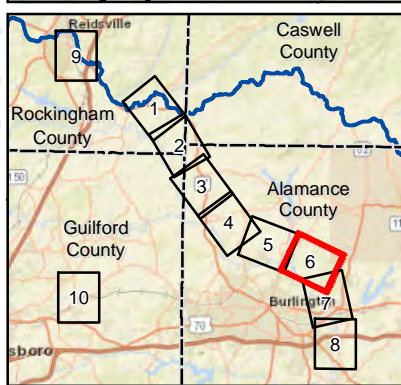
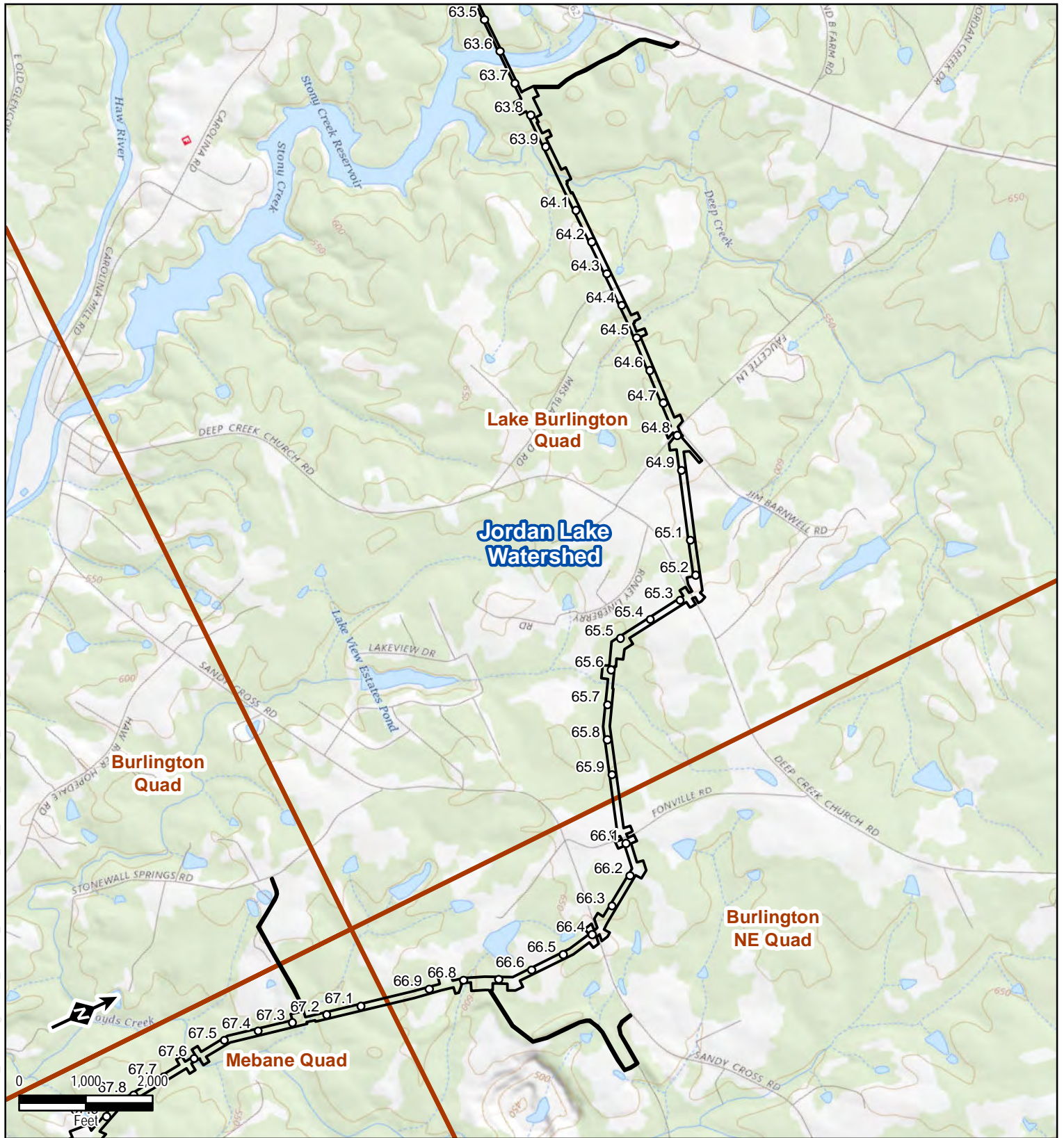
Mountain Valley PIPELINE LLC

Section 404/401 Permit Application
 Jordan Watershed
 USGS Topographic Quad Maps
 Response to Additional Information
 Alamance County, NC
 Sheet 5 of 10

TRC Resilience you can rely on

600 Willowbrook Ln
 West Chester, PA 19382
 Date: February 2019

S:\1-PROJECTS\NEXT ERA\300423_MVP_Southgate\6-MXD\State_Permitt\Frozen_October_2018\0927404_401_USGS_Quad_NC_Jordan_8x11P.mxd; Time: 4:30:26 PM



Legend

- Mileposts
- ▭ Limits of Construction Right-of-Way
- ▨ Jordan Lake Watershed
- ▭ USGS Topo Quad Boundary
- - - County Boundary

Data Sources: EQT, ESRI, NC OneMap, TRC, USGS
 Basemap: USGS

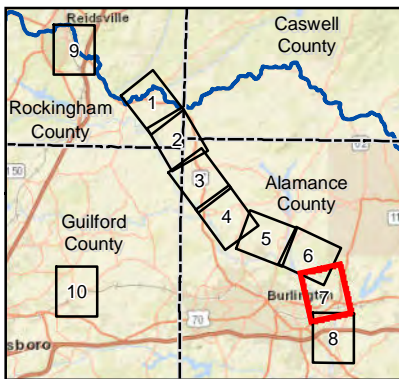
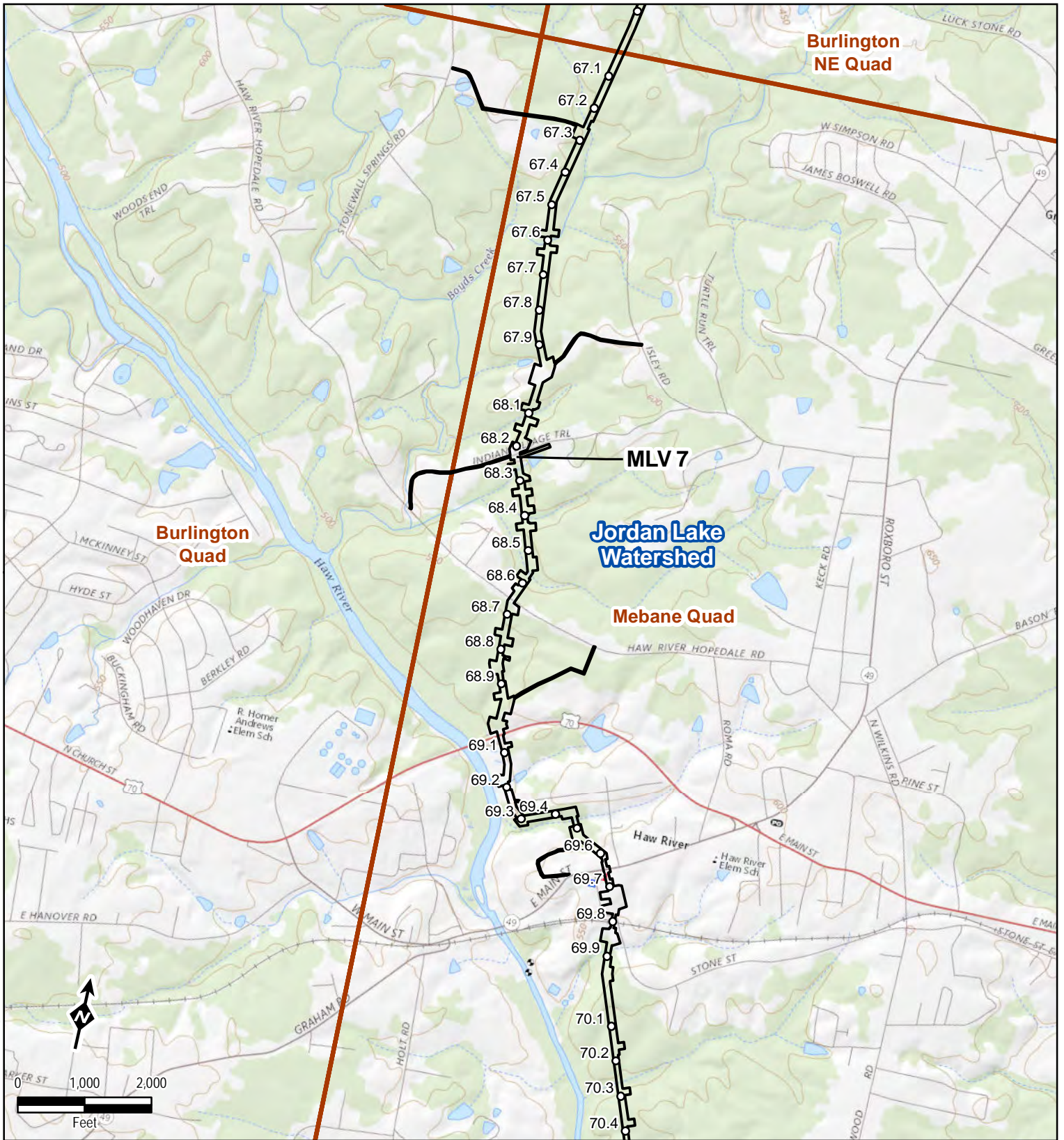
1 inch = 2,000 feet
 When Printed 8.5x11

Mountain Valley PIPELINE LLC

Section 404/401 Permit Application
 Jordan Watershed
 USGS Topographic Quad Maps
 Response to Additional Information
 Alamance County, NC
 Sheet 6 of 10

TRC
 600 Willowbrook Ln
 West Chester, PA 19382
 Date: February 2019

S:\PROJECTS\NEXT ERA\300423_MVP_Southgate\6-MXD\State_Permitting\Frozen_October_2018\0927404_401_USGS_Quad_NC_Jordan_8x11P.mxd; Time: 4:30:28 PM



Legend

- Mileposts
- ▭ Limits of Construction Right-of-Way
- ▨ Jordan Lake Watershed
- ▭ USGS Topo Quad Boundary
- ▭ County Boundary

Data Sources: EQT, ESRI, NC OneMap, TRC, USGS
 Basemap: USGS

1 inch = 2,000 feet
 When Printed 8.5x11

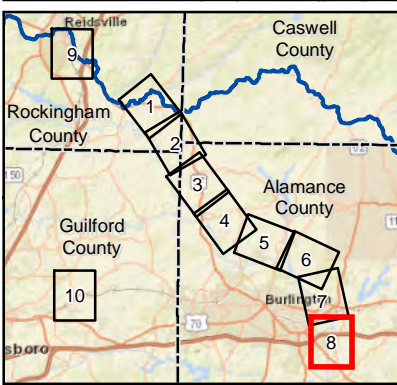
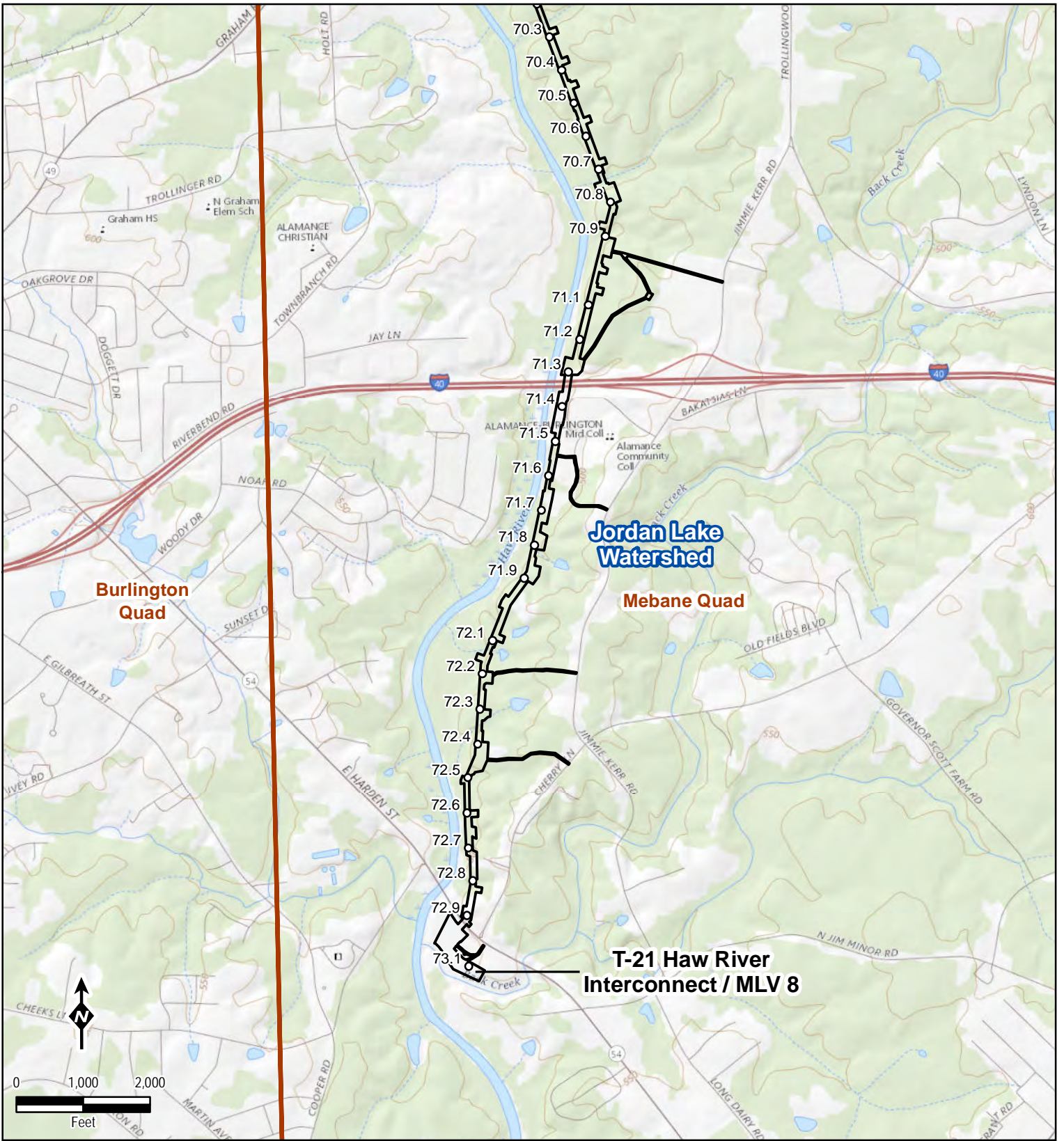
Mountain Valley
 PIPELINE, LLC

Section 404/401 Permit Application
 Jordan Watershed
 USGS Topographic Quad Maps
 Response to Additional Information
 Alamance County, NC
 Sheet 7 of 10

TRC
 Results you can rely on

600 Willowbrook Ln
 West Chester, PA 19382
 Date: February 2019

S:\1-PROJECTS\NEXT ERA\300423_MVP_Southgate\6-MXD\State_Permitting\Frozen_October_2018\0927\404_401_USGS_Quad_NC_Jordan_8x11P.mxd; Time: 4:30:32 PM



Legend

- Mileposts
- ▭ Limits of Construction Right-of-Way
- ▨ Jordan Lake Watershed
- ▭ USGS Topo Quad Boundary
- ▭ County Boundary

Data Sources: EOT, ESRI, NC OneMap, TRC, USGS
 Basemap: USGS

1 inch = 2,000 feet
 When Printed 8.5x11

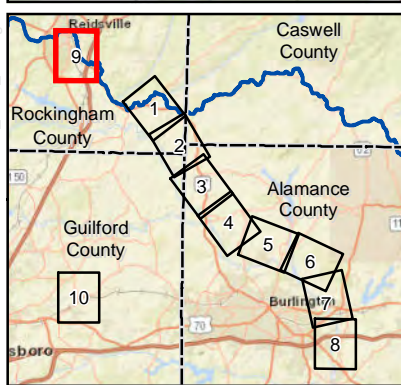
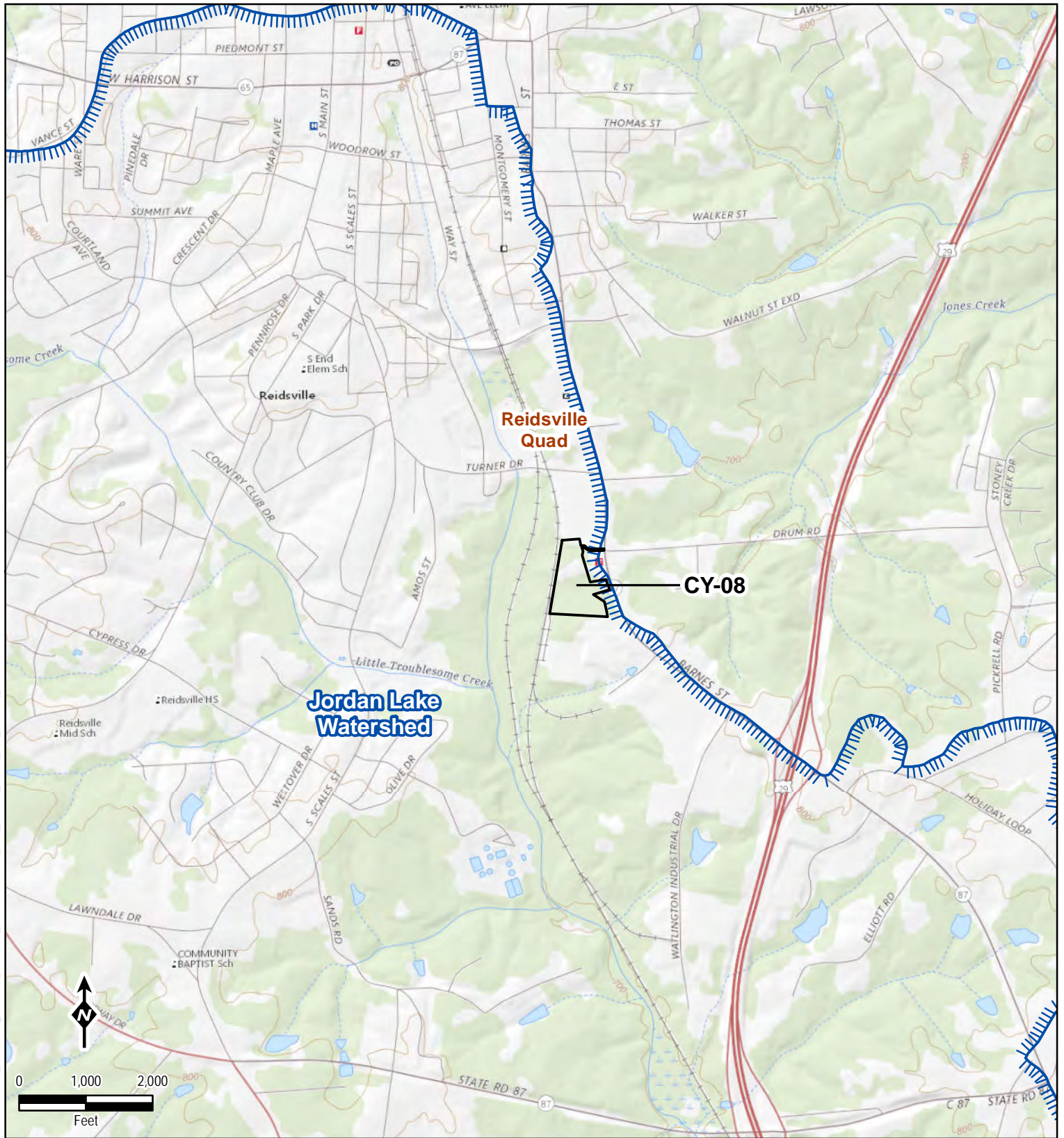
Mountain Valley PIPELINE LLC

Section 404/401 Permit Application
 Jordan Watershed
 USGS Topographic Quad Maps
 Response to Additional Information
 Alamance County, NC
 Sheet 8 of 10

TRC
 Results you can rely on

600 Willowbrook Ln
 West Chester, PA 19382
 Date: February 2019

SM-PROJECTS\NEXT\ERA\300423_MVP_Southgate\6-MXD\State_Permittin\Frozen_October_2019\0927404_401_USGS_Quad_NC_Jordan_8x11P.mxd; Time: 4:30:35 PM



Legend

- Mileposts
- ▭ Limits of Construction Right-of-Way
- ▨ Jordan Lake Watershed
- ▭ USGS Topo Quad Boundary
- - - County Boundary

Data Sources: EQT, ESRI, NC OneMap, TRC, USGS
 Basemap: USGS

1 inch = 2,000 feet
 When Printed 8.5x11

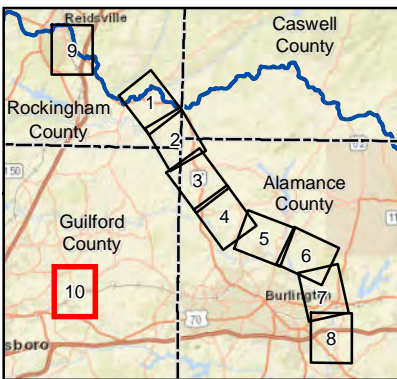
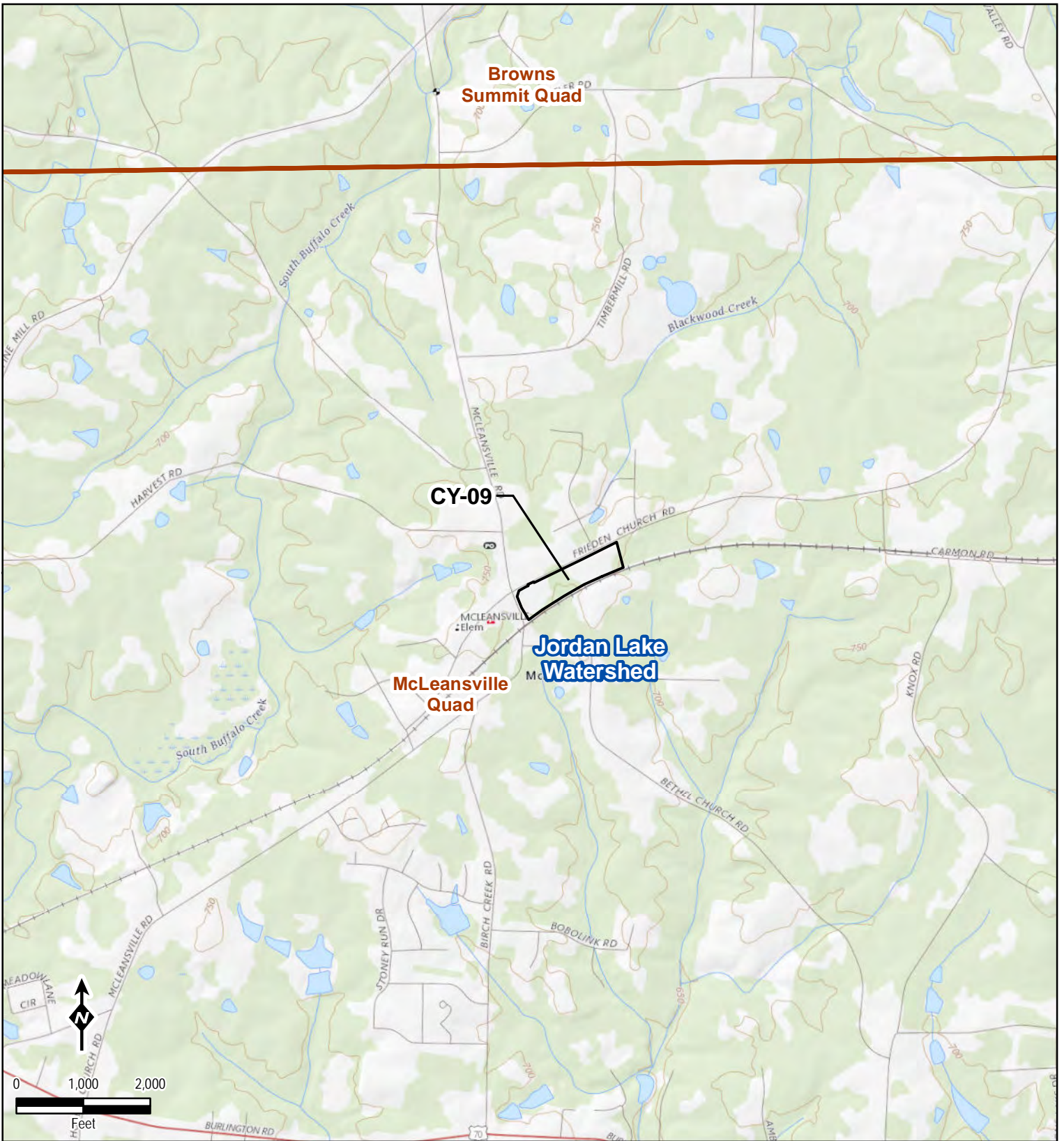
Mountain Valley PIPELINE LLC

Section 404/401 Permit Application
 Jordan Watershed
 USGS Topographic Quad Maps
 Response to Additional Information
 Rockingham County, NC
 Sheet 9 of 10

TRC
 Ready to go with you

600 Willowbrook Ln
 West Chester, PA 19382
 Date: February 2019

SM-PROJECTS\NEXT\ERA\300423_MVP_Southgate\6-MXD\State_Permitt\Frozen_October_2018\0927\404_401_USGS_Quad_NC_Jordan_8x11P.mxd; Time: 4:30:37 PM



Legend

- Mileposts
- ▭ Limits of Construction Right-of-Way
- ▨ Jordan Lake Watershed
- ▭ USGS Topo Quad Boundary
- - - County Boundary

Data Sources: EQT, ESRI, NC OneMap, TRC, USGS
 Basemap: USGS

1 inch = 2,000 feet
 When Printed 8.5x11

Mountain Valley
 PIPELINE LLC

Section 404/401 Permit Application
 Jordan Watershed
 USGS Topographic Quad Maps
 Response to Additional Information
 Guilford County, NC
 Sheet 10 of 10

TRC
 Results you can rely on

600 Willowbrook Ln
 West Chester, PA 19382
 Date: February 2019



MVP Southgate Project

Attachment D Mitigation Reserve Letters



Riparian Buffer Credits Statement of Availability
Cape Fear 02 Jordan Lake - *Haw River Subwatershed*

January 31, 2019

Mountain Valley Pipeline LLC
Attn: Matthew Raffenberg
700 Universe Blvd
Juno Beach, FL 33408

RE: Availability of Riparian Buffer Credits for the “MVP Southgate, Rockingham and Alamance Counties, NC” project
Bank Name: UT to Pine Hill Branch Nutrient Offset & Buffer Mitigation Bank
Bank Sponsor: Wildlands Holdings, IV, LLC
DWR Project Number: 2017-0886v2
Permittee: Mountain Valley Pipeline LLC
Riparian Buffer Credits Requested: 11.48 acres (500,000 sq. ft.)
Riparian Buffer Credits Available: 3.31 acres (144,074 sq. ft.)
Cape Fear 03030002 River Basin

Dear Mr. Raffenberg:

Wildlands Holdings IV, LLC currently has sufficient riparian Buffer credits from the **UT to Pine Hill Branch Nutrient Offset & Buffer Mitigation Bank** to satisfy a large portion of the riparian buffer mitigation requirements related to the above-mentioned project (including the attached South Fork SOA). The project is located within the service area (HUC **03030002**) of the Bank.

Please note: In the next several months, Wildlands Holdings IV, LLC anticipates receiving an additional **165,441 sq. ft** in forthcoming credit releases for the UT to Pine Hill Branch Nutrient Offset & Buffer Mitigation Bank, which in addition to the attached South Fork SOA should provide enough credits to meet the entire need of this project.

This letter is simply a statement of availability of credits as of the date written. Although current inventory is high, the letter is not a guarantee of availability as credits will be sold on a first come, first serve basis. An invoice for this transaction will be sent upon your request and we will formally reserve both the credits and price quoted for a period of 30 days from the invoice at no cost.

Final transfer of the credits will be made upon receipt of a copy of the 401 Water Quality Certification Authorization Certificate from the NC Department of Environmental Quality approving the Riparian Buffer mitigation purchase from the Bank and upon receipt of your payment to Wildlands Holding III,



LLC. We will then issue a credit transfer certificate verifying your credit purchase to the North Carolina Division of Water Resources and to you for your records

We appreciate the opportunity to assist you with your mitigation requirements. Please contact me at 205-807-0800 or ihazelhoff@wildlandseng.com if you have any questions or need any additional information.

Sincerely,

A handwritten signature in blue ink, appearing to read "Ian M. Hazelhoff".

Ian M. Hazelhoff
Wildlands Engineering, Inc.
Land Acquisition
ihazelhoff@wildlandseng.com
O: (704) 332-7754 ex. 120
M: (205) 807-0800

Cc: Kevin Martin, Soil and Environmental Consultants, PA



Riparian Buffer Credits Statement of Availability
Cape Fear 02 Jordan Lake - *Haw River Subwatershed*

January 31, 2019

Mountain Valley Pipeline LLC
Attn: Matthew Raffenberg
700 Universe Blvd
Juno Beach, FL 33408

RE: Availability of Riparian Buffer Credits for the “MVP Southgate, Rockingham and Alamance Counties, NC” project
Bank Name: UT to Pine Hill Branch Nutrient Offset & Buffer Mitigation Bank
Bank Sponsor: Wildlands Holdings, IV, LLC
DWR Project Number: 2017-0886v2
Permittee: Mountain Valley Pipeline LLC
Riparian Buffer Credits Requested: 11.48 acres (500,000 sq. ft.)
Riparian Buffer Credits Available: 3.31 acres (144,074 sq. ft.)
Cape Fear 03030002 River Basin

Dear Mr. Raffenberg:

Wildlands Holdings IV, LLC currently has sufficient riparian Buffer credits from the **UT to Pine Hill Branch Nutrient Offset & Buffer Mitigation Bank** to satisfy a large portion of the riparian buffer mitigation requirements related to the above-mentioned project (including the attached South Fork SOA). The project is located within the service area (HUC **03030002**) of the Bank.

Please note: In the next several months, Wildlands Holdings IV, LLC anticipates receiving an additional **165,441 sq. ft** in forthcoming credit releases for the UT to Pine Hill Branch Nutrient Offset & Buffer Mitigation Bank, which in addition to the attached South Fork SOA should provide enough credits to meet the entire need of this project.

This letter is simply a statement of availability of credits as of the date written. Although current inventory is high, the letter is not a guarantee of availability as credits will be sold on a first come, first serve basis. An invoice for this transaction will be sent upon your request and we will formally reserve both the credits and price quoted for a period of 30 days from the invoice at no cost.

Final transfer of the credits will be made upon receipt of a copy of the 401 Water Quality Certification Authorization Certificate from the NC Department of Environmental Quality approving the Riparian Buffer mitigation purchase from the Bank and upon receipt of your payment to Wildlands Holding III,



LLC. We will then issue a credit transfer certificate verifying your credit purchase to the North Carolina Division of Water Resources and to you for your records

We appreciate the opportunity to assist you with your mitigation requirements. Please contact me at 205-807-0800 or ihazelhoff@wildlandseng.com if you have any questions or need any additional information.

Sincerely,

A handwritten signature in blue ink, appearing to read "Ian M. Hazelhoff".

Ian M. Hazelhoff
Wildlands Engineering, Inc.
Land Acquisition
ihazelhoff@wildlandseng.com
O: (704) 332-7754 ex. 120
M: (205) 807-0800

Cc: Kevin Martin, Soil and Environmental Consultants, PA



Statement of Mitigation Credit Availability

February 1, 2019

Division of Water Resources

Re: Availability of Compensatory Riparian Buffer Credits
Project: MVP Southgate Project – Rockingham & Alamance Counties, NC

We are providing this letter in accordance with 33 CFR §332.8(r), to confirm that the below table of **Riparian Buffer Mitigation Credits** (Credits) from the listed banks (Banks) are currently available and may be used, once transferred, for compensatory mitigation relative to the **MVP Southgate** project, and as proposed by **Mountain Valley Pipeline, LLC** (Applicant).

Bank Name	Amount of Credits
Bass Mountain	91,388.00
Benton Branch	77,568.42
Motes Creek	183,520.44
Orphan Creek	63,943.40
Rocky Top	54,353.93
TOTAL	470,774.19

The Applicant may ultimately purchase the Credits, if they are available, following Permit issuance. Should the Applicant purchase the Credits at that time, we will complete and execute the Compensatory Mitigation Responsibility Transfer Form (Transfer Form) within five (5) days of receipt of the full purchase price.

We will additionally provide copies of the completed and executed Transfer Form to the Applicant and, if needed, other regulatory agencies. Transaction information in the updated Bank Ledger will include relevant Permit and Applicant information as well as the number and resource type of the debited Credits.

Should your office have any questions, please contact me at 919.334.9123.

Sincerely,

Tiffani Bylow
Restoration Systems, LLC