



MVP Southgate Project H-605 Line



REV. BY	DATE	DESCRIPTION
P2	11/02/18	ISSUED FOR FERC

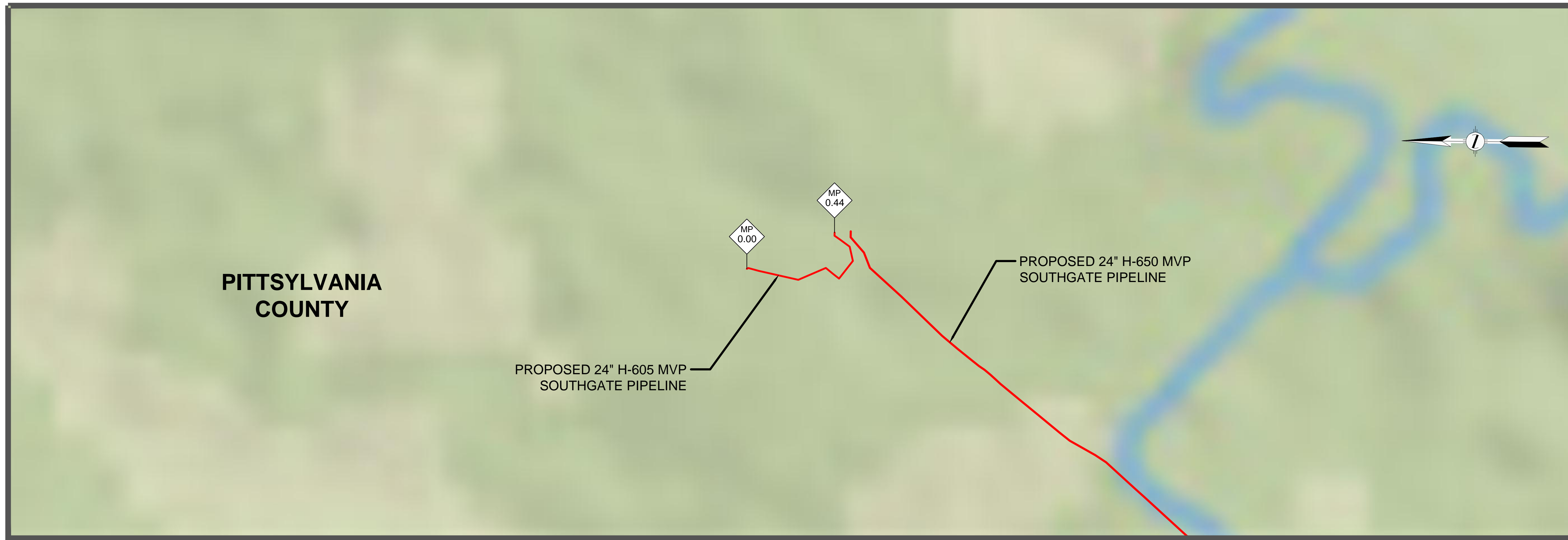
APPROVED FOR BIDDING	APPROVED FOR CONSTRUCTION		
REV. BY	DATE	REV. BY	DATE

APPROVED FOR FERC	APPROVED FOR BIDDING	APPROVED FOR CONSTRUCTION			
REV. BY	DATE	REV. BY	DATE	REV. BY	DATE


Mountain Valley
 PIPELINE LLC
PIPELINE COVER SHEET
MVP SOUTHGATE PROJECT - H-605 LINE

HORZ. SCALE:	NONE
DRAWN BY:	TRC 10/27/18
DRAFTING CK:	10/28/18
ENGINEERING CK:	
CONSTRUCTION CK:	
ENVIRONMENTAL CK:	
AFE/PO NO.:	
TRC PROJECT NO.:	300423
DRAWING NO.:	PA-GEN-H-605-01
SHEET:	1 OF 2 REV. P2
DATE OF PLOT:	10/29/2018 12:35:15 PM

ISSUED FOR FERC



REV. BY	DATE	DESCRIPTION
P2	11/02/18	ISSUED FOR FERC

APPROVED FOR CONSTRUCTION	REV. BY	DATE

APPROVED FOR BIDDING	REV. BY	DATE

APPROVED FOR FERC	REV. BY	DATE

HORZ. SCALE: NONE	
DRAWN BY: TRC	10/27/18
DRAFTING CK:	10/28/18
ENGINEERING CK:	
CONSTRUCTION CK:	
ENVIRONMENTAL CK:	
AFE/PO NO.:	
TRC PROJECT NO.:	300423
DRAWING NO.:	PA-GEN-H-605-02
SHEET: 2 OF 2	REV. P2
DATE OF PLOT: 11/5/2018 3:53:23 PM	



MVP Southgate Project H-605 Line

DRAWING INDEX

PA-GEN-H-605-01	COVER SHEET
PA-GEN-H-605-02	INDEX SHEET
<u>ALIGNMENT SHEETS</u>	
PA-PIVA-H-605-01	PIPELINE ALIGNMENT, STA. 0+00 TO STA. 23+13

ISSUED FOR FERC

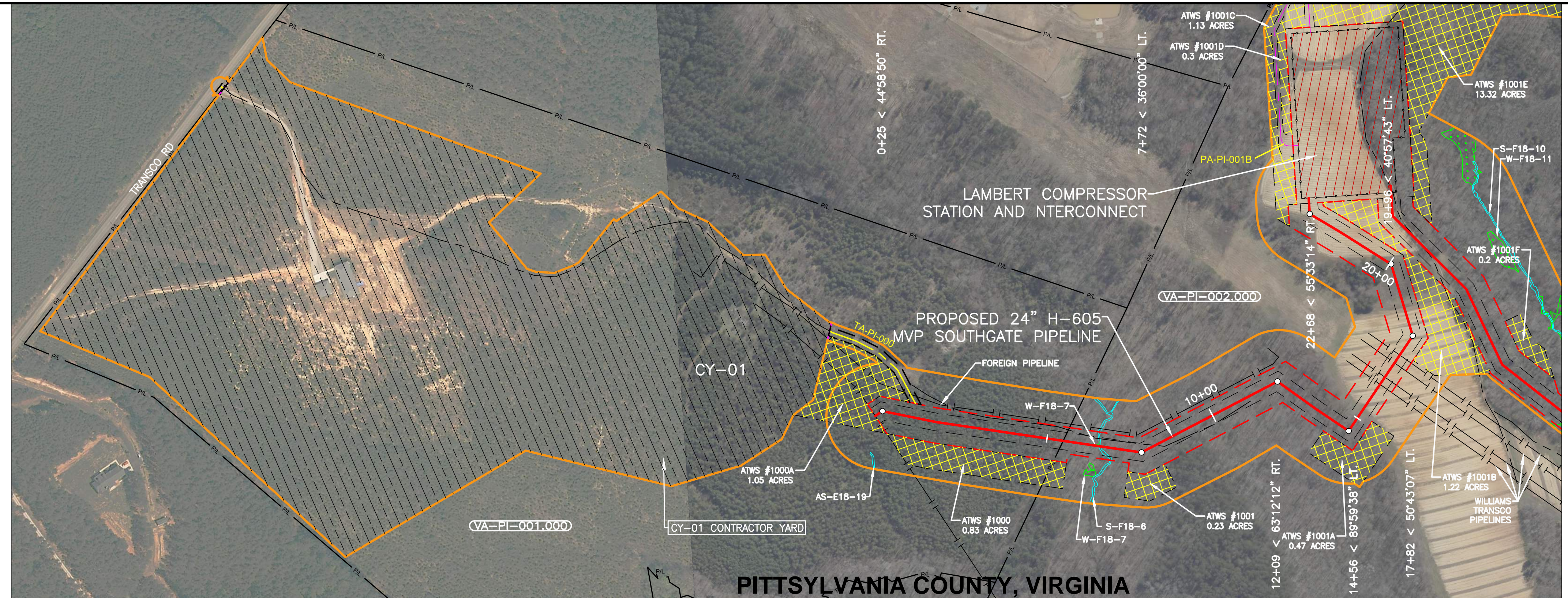
Mountain Valley PIPELINE LLC
PIPELINE INDEX SHEET
MVP SOUTHGATE PROJECT - H-605 LINE

RIGHT-OF-WAY & OWNERSHIP DATA		0+00	547 LF	5+47	VA-PI-001.000	1766 LF	23+13	VA-PI-002.000
DESIGN	PIPE / COATING	0+00				1	23+13	
	SLOPE DISTANCE							
	CLASS LOCATION / HCA					1		
ENVIRONMENTAL	CONSTRUCTION EXCLUSION							
	WETLAND / STREAM					W-F18-7 12 LF	S-F18-6 6 LF	

PLAN VIEW

LEGEND

- STUDY CORRIDOR
- PROPOSED PIPELINE
- NON-SURVEYED C/L
- EXISTING PIPELINE
- PERMANENT EASEMENT
- WORK SPACE LIMITS
- PERMANENT ACCESS RD
- TEMPORARY ACCESS RD
- COUNTY LINE
- PROPERTY LINE
- ROAD RIGHT-OF-WAY
- FENCE LINE
- BURIED FIBER OPTIC
- OVERHEAD POWER
- OVERHEAD TELEPHONE
- C/L ROAD
- C/L RAILROAD
- DELINEATED STREAM
- DELINEATED WETLAND
- PI SYMBOL
- MAILBOX
- LINE MARKER - VENT PIPE
- POWER/TELE POLE
- TOWER LEG
- GAS VALVE
- WELL - WATER
- POST - GATE/FENCE
- ELEC/GAS/WTR METER
- PEDESTAL - UTILITY
- MH - SANITARY/WATER
- MANLINE VALVE
- ADD ENTRY/EXIT
- ADDITIONAL TEMPORARY WORK SPACE(ATWS)
- ABOVE GROUND FACILITY
- CONTRACTOR YARD



REFERENCE DRAWINGS

DRAWING NO.	DESCRIPTION
C-V-LAM-1100-01	LAMBERT COMPRESSOR STATION

HORIZONTAL STATIONING

WORK SPACE

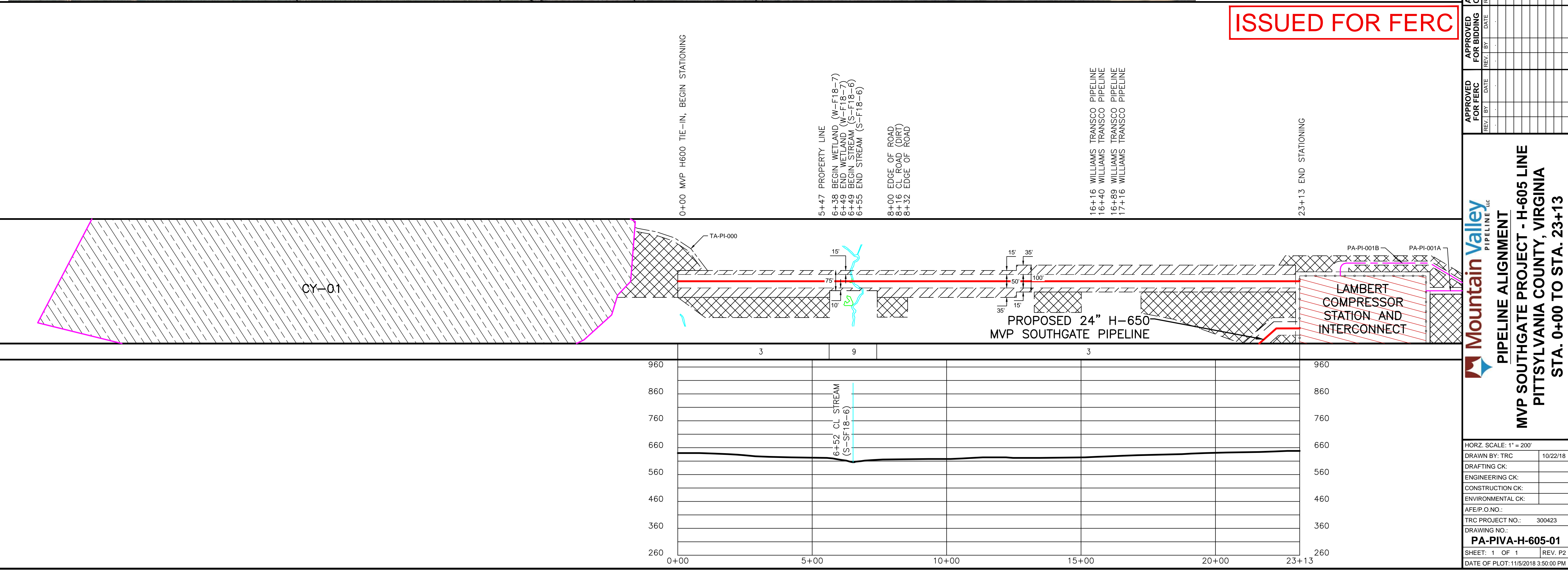
- PROPOSED PIPELINE
- EXISTING PIPELINE
- ACCESS ROAD
- TEMPORARY WORK SPACE
- PERMANENT EASEMENT
- TEMPORARY WORK SPACE(TWS)
- ADD. TEMPORARY WORK SPACE(ATWS)

CONSTRUCTION METHOD

CONSTRUCTION METHOD KEY

- 3 - NON-PARALLEL CONSTRUCTION WITH TOP SOIL SEGREGATION
- 5 - ROAD X-ING BORED
- 7 - RAILROAD X-ING BORED
- 9 - WATERBODY X-ING OPEN CUT - FLUME
- 12 - HORIZONTAL DIRECTIONAL DRILL (HDD)
- 13 - PARALLEL TO POWER LINES
- 17 - PARALLEL TO FOREIGN LINES
- 25 - ROAD X-ING BORED WITH PARALLEL PIPELINES
- 27 - RAILROAD X-ING BORED WITH PARALLEL PIPELINES
- 29 - WATERBODY X-ING WITH PARALLEL PIPELINES OPEN CUT - FLUME

PROFILE



ISSUED FOR FERCC



REVISIONS

REV. NO.	DATE	DESCRIPTION
P1	10/22/18	ISSUED FOR CLIENT REVIEW
P2	11/02/18	ISSUED FOR FERCC

MATERIAL SUMMARY

REV. NO.	DATE	DESCRIPTION
1	2/13/18	24" O.D. X 0.375" W.T. X-70, FERCC

APPROVED FOR CONSTRUCTION

REV. BY	DATE

Mountain Valley PIPELINE LLC

PIPELINE ALIGNMENT

MVP SOUTHGATE PROJECT - H-605 LINE

PITTSYLVANIA COUNTY, VIRGINIA

STA. 0+00 TO STA. 23+13

APPROVED FOR FERCC

REV. BY	DATE

HORZ. SCALE: 1" = 200'

DRAWN BY: TRC 10/22/18

DRAFTING CK:

ENGINEERING CK:

CONSTRUCTION CK:

ENVIRONMENTAL CK:

AFE/PO NO.:

TRC PROJECT NO.: 300423

DRAWING NO.:

PA-PIVA-H-605-01

SHEET: 1 OF 1 REV. P2

DATE OF PLOT: 11/5/2018 3:50:00 PM